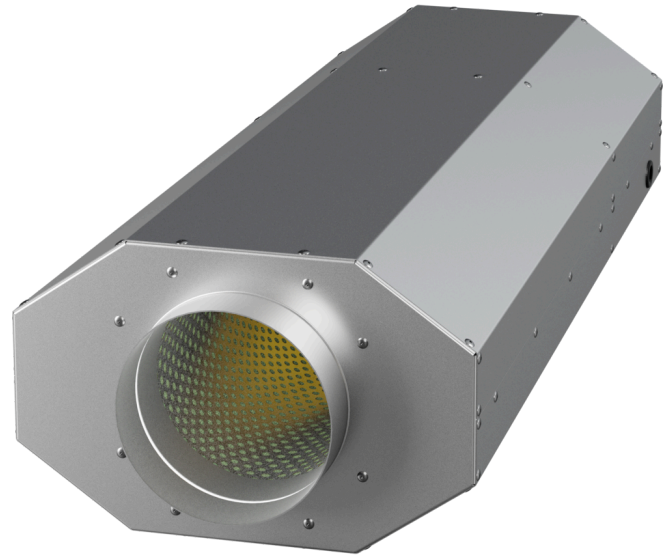


EMI 150 EC O 01

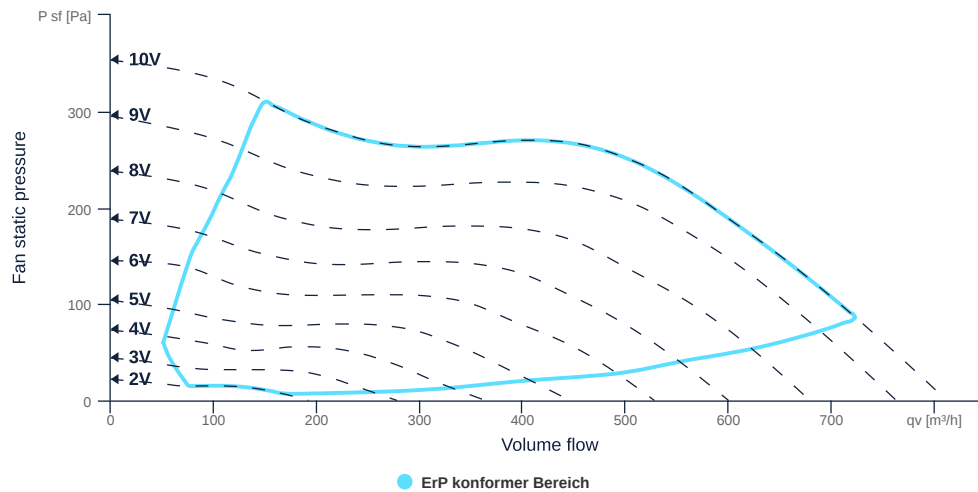
158064

- High-efficiency, insulated diagonal fan
- Optimum sound attenuation due to silencer
- Very compact housing made of galvanized sheet steel
- High efficiency EC motor, steplessly controllable
- Highest aerodynamic efficiency
- Conveyed medium temperature up to 45 °C in continuous operation



FAN CURVES

Name	Value	Unit
Volume flow	0	m³/h
Pressure	0	Pa



to the product detail page

GENERAL DATA

Name	Value	Unit	Formula symbol
Labeling	CE, UKCA		
Duct size	-		WxH _{duct}
Pipe connection size (DN)	DN150		DN
Rated voltage (entire device)	230	V	U _{rated}
Phases (entire device)	1~		phase
Electrical protection (entire device)	6 A		fuse
Housing material	Galvanized steel		mat _{casing}
Impeller material	Plastic		mat _{impeller}
Weight	10.3	kg	m
Fan type	Diagonal		F _{an} type
Category / Installation situation	B		cat

MAXIMAL DATA

Name	Value		Unit	Formula symbol
	50 Hz	60 Hz		
Max. power consumption (device)	70	70	W	P _{ed, max}
Max. operating current (device)	0.6	0.6	A	I _{ed, max}
Max. speed	3750	3750	1/min	n _{max}
Max. stat. efficiency	49.3	49.3	%	η _{es}
Max. fan efficiency	57.1	57.1	%	η _e
Max. flowrate	810	810	m ³ /h	q _{v, max}
Max. stat pressure	350	350	Pa	p _{sf, max}
Max. medium temperature	45	45	°C	T _{m, max}
Max. environment temperature	45	45	°C	T _{amb, max}
Min. environment temperature	-30	-30	°C	T _{amb, min}



to the product detail page

MOTOR DATA

Name	Value		Unit	Formula symbol
	50 Hz	60 Hz		
Rated frequency (device)		50		f
Motor type		EC		phase
Control type		stepless-controlled		ctrltype
Installation type		ORM (Out)		install
Rotation direction		right		rotation
Isolation class		ISO F		ISOclass
Motor-protection		TEC		protectmotor
Protection class		IP54		IPmotor
Is pole-changeable		No		polexch
Type of power supply		AC 1~		pwrsupmotor
Rated voltage	230		V	U _{rated, f1}
Rated current	0.56		A	I _{rated, f1}
Shaft power	70		W	P _{out, f1}
Speed	Speed	3655	1/min	n _{f1}
Min. temperature	-30		°C	T _{motor, min}
UL-Certification motor		None		ULcert

ERP DATA (LOT11)

Name	Value	Unit	Formula symbol
Speed at the energy efficiency optimum	3662	1/min	n _{opt}
Efficiency level	60.9	%	N
Efficiency category	total		catefficiency
Input power of the motor at the energy efficiency optimum	0.06	kW	P _{e, opt}
Overall efficiency	84	%	η _{ges}
Measurement category	B		meas cat
Fan pressure at energy efficiency optimum	248	Pa	p _{f, opt}
Flowrate at energy efficiency optimum	478	m ³ /h	q _{v, opt}



to the product detail page