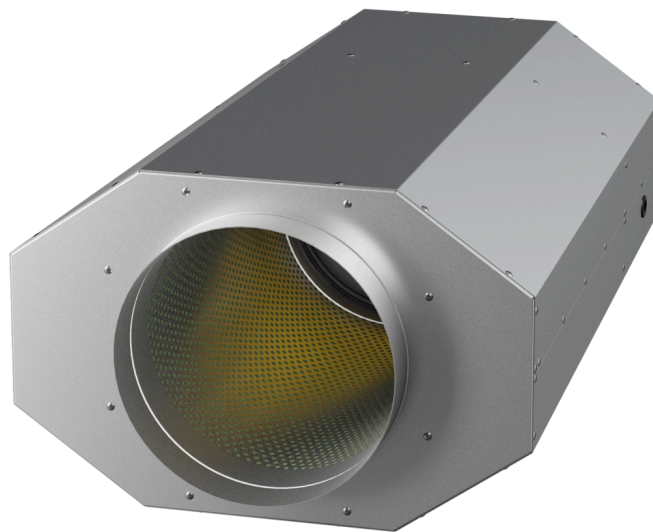


# EMI 250 E2M O 01

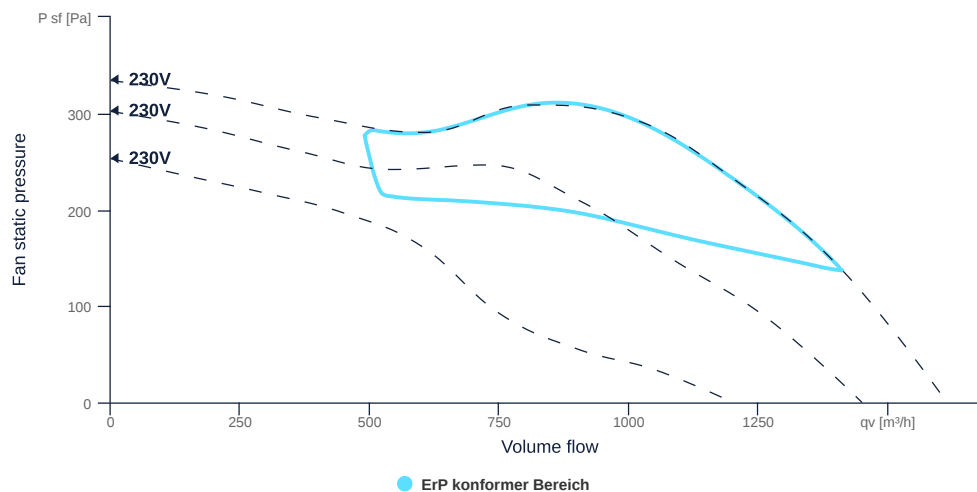
158239

- High-efficiency, insulated diagonal fan
- Optimum sound attenuation due to silencer
- Very compact housing made of galvanized sheet steel
- Robust AC motor, 3-steps controllable
- Highest aerodynamic efficiency
- Conveyed medium temperature up to 50 °C in continuous operation



## FAN CURVES

Name	Value	Unit
Volume flow	0	m³/h
Pressure	0	Pa



to the product detail page

# EMI 250 E2M O 01

158239

**ruck**

## GENERAL DATA

Name	Value	Unit	Formula symbol
Labeling	CE, UKCA		
Duct size	-		WxH <sub>duct</sub>
Pipe connection size (DN)	DN250		DN
Rated voltage (entire device)	230	V	U <sub>rated</sub>
Phases (entire device)	1~		phase
Electrical protection (entire device)	6 A		fuse
Housing material	Galvanized steel		mat <sub>casing</sub>
Impeller material	Plastic		mat <sub>impeller</sub>
Weight	14.3	kg	m
Fan type	Diagonal		Fan <sub>type</sub>
Category / Installation situation	B		cat

## MAXIMAL DATA

Name	Value	Unit	Formula symbol
Max. power consumption (device)	178	W	P <sub>ed, max</sub>
Max. operating current (device)	0.83	A	I <sub>ed, max</sub>
Max. speed	2900	1/min	n <sub>max</sub>
Max. stat. efficiency	44.4	%	η <sub>es</sub>
Max. fan efficiency	47.8	%	η <sub>e</sub>
Max. flowrate	1610	m <sup>3</sup> /h	Q <sub>v, max</sub>
Max. stat pressure	330	Pa	p <sub>sf, max</sub>
Max. medium temperature	50	°C	T <sub>m, max</sub>
Max. environment temperature	50	°C	T <sub>amb, max</sub>
Min. environment temperature	-25	°C	T <sub>amb, min</sub>



to the product detail page

## MOTOR DATA

Name	Value		Unit	Formula symbol
	50 Hz	60 Hz		
Rated frequency (device)		50		f
Motor type		AC 1~		phase
Installation type		IRM (In)		install
Rotation direction		right		rotation
Isolation class		ISO F		ISOclass
Motor-protection		TAI		protectmotor
Protection class		IP00		IPmotor
Is pole-changeable		No		polexch
Type of power supply		AC 1~		pwrsupmotor
Capacity capacitor		5	μF	Ccond
Voltage capacitor		450	V	VUcond
Number of poles (1)		2.000000		num polesw1
Rated voltage	230		V	U <sub>rated, f1</sub>
Rated current	0.75		A	I <sub>rated, f1</sub>
Shaft power	100		W	P <sub>out, f1</sub>
UL-Certification motor		None		ULcert

## ERP DATA (LOT11)

Name	Value	Unit	Formula symbol
Speed at the energy efficiency optimum	2824	1/min	n <sub>opt</sub>
Efficiency level	56.3	%	N
Efficiency category	total		catefficiency
Input power of the motor at the energy efficiency optimum	0.17	kW	P <sub>e, opt</sub>
Overall efficiency	75	%	η <sub>ges</sub>
Measurement category	B		meas cat
Fan pressure at energy efficiency optimum	282	Pa	p <sub>f, opt</sub>
Flowrate at energy efficiency optimum	1066	m <sup>3</sup> /h	q <sub>v, opt</sub>



to the product detail page