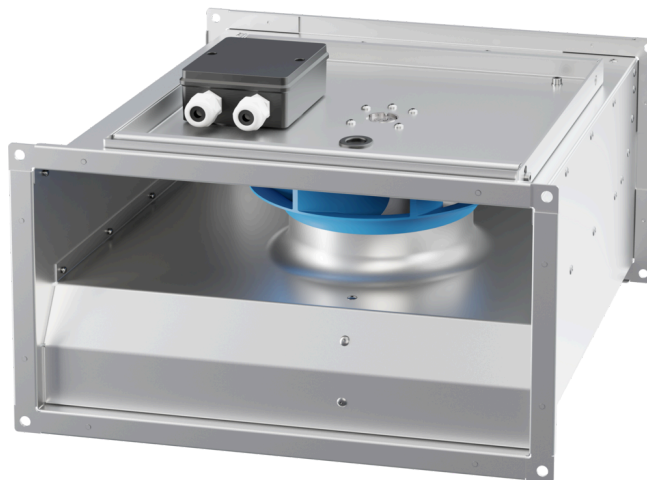


# KVR 4020 EC O K 01

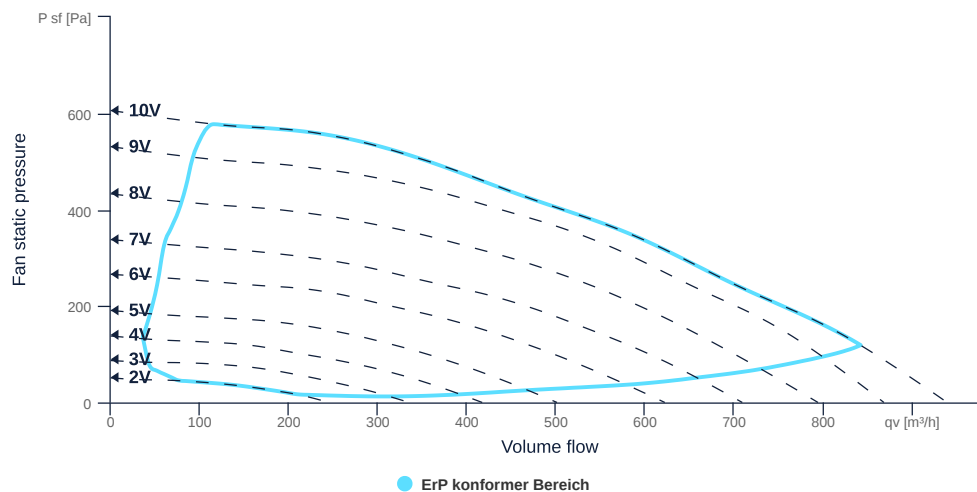
166485

- Backward curved centrifugal impeller
- Removable fan unit
- Housing made of galvanized sheet steel
- High efficiency EC motor, steplessly controllable, external rotor
- Conveyed medium temperature up to 50 °C in continuous operation
- Internal electronic temperature monitoring



## FAN CURVES

Name	Value	Unit
Volume flow	0	m³/h
Pressure	0	Pa



to the product detail page

## GENERAL DATA

Name	Value	Unit	Formula symbol
Labeling	CE, UKCA		
Duct size	400x200		WxHduct
Pipe connection size (DN)	-		DN
Rated voltage (entire device)	230	V	U <sub>rated</sub>
Phases (entire device)	1~		phase
Electrical protection (entire device)	6 A		fuse
Housing material	Galvanized steel		matcasing
Impeller material	Plastic		matimpeller
IP-protection class (entire device)	IPX4		IP <sub>compl</sub>
IP-Protection class (terminal box)	IP44		IP <sub>ebox</sub>
Weight	9.3	kg	m
Nominal air flow rate, nominal point m <sup>3</sup> /h	842.4	m <sup>3</sup> /h	q <sub>v,nom</sub>
Nominal external pressure, static	119	Pa	p <sub>s,nom</sub>
Fan type	Radial		Fan <sub>type</sub>
Category / Installation situation	A		cat

## ERP DATA (LOT 6)

Name	Value	Unit	Formula symbol
Nominal air flow rate, nominal point m <sup>3</sup> /s	0.23	m <sup>3</sup> /s	q <sub>v,nom</sub>
Actual electrical input power, nominal point	0.1	kW	P <sub>e,nom</sub>
Face velocity, nominal point	2.92	m/s	v <sub>nom</sub>
Nominal external pressure, static	119	Pa	p <sub>s,nom</sub>
static efficiency of the extract fan, nominal point	27.8	%	η <sub>es,EHA</sub>
Enclosure sound level, nominal point	61.61	dB(A)	L <sub>WA2</sub>
Rating	Product is compliant 2018		



to the product detail page

## MAXIMAL DATA

Name	Value		Unit	Formula symbol
	50 Hz	60 Hz		
Max. power consumption (device)	121	121	W	$P_{ed, max}$
Max. operating current (device)	1	1	A	$I_{ed, max}$
Max. speed	2940	2940	1/min	$n_{max}$
Max. stat. efficiency	46.8	46.8	%	$\eta_{es}$
Max. fan efficiency	47	47	%	$\eta_e$
Max. flowrate	1010	1010	m <sup>3</sup> /h	$q_v, max$
Max. stat pressure	600	600	Pa	$p_{sf, max}$
Max. medium temperature	60	60	°C	$T_m, max$
Max. environment temperature	60	60	°C	$T_{amb, max}$
Min. environment temperature	-30	-30	°C	$T_{amb, min}$

## MOTOR DATA

Name	Value		Unit	Formula symbol
	50 Hz	60 Hz		
Rated frequency (device)		50		f
Motor type			EC	phase
Control type			stepless-controlled	ctrltype
Installation type			ORM (Out)	install
Rotation direction			right	rotation
Isolation class			ISO F	ISOclass
Motor-protection			TEC	protectmotor
Protection class			IP54	IPmotor
Is pole-changeable			No	polexch
Type of power supply			AC 1~	pwsupmotor
Rated voltage	230		V	$U_{rated, f1}$
Rated current	0.89		A	$I_{rated, f1}$
Shaft power	113		W	$P_{out, f1}$
Speed	2908		1/min	$n_{f1}$
Efficiency	48.7		%	$\eta_m, f1$
UL-Certification motor			None	ULcert



to the product detail page