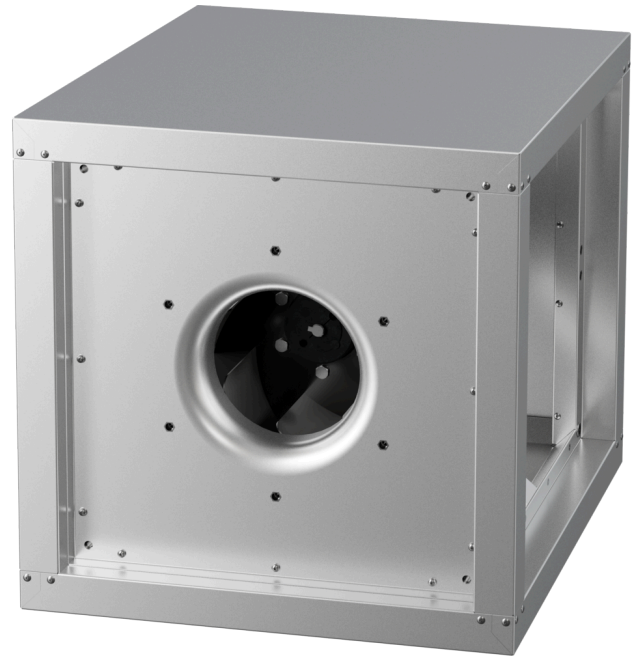


# MPC 225 E2 21

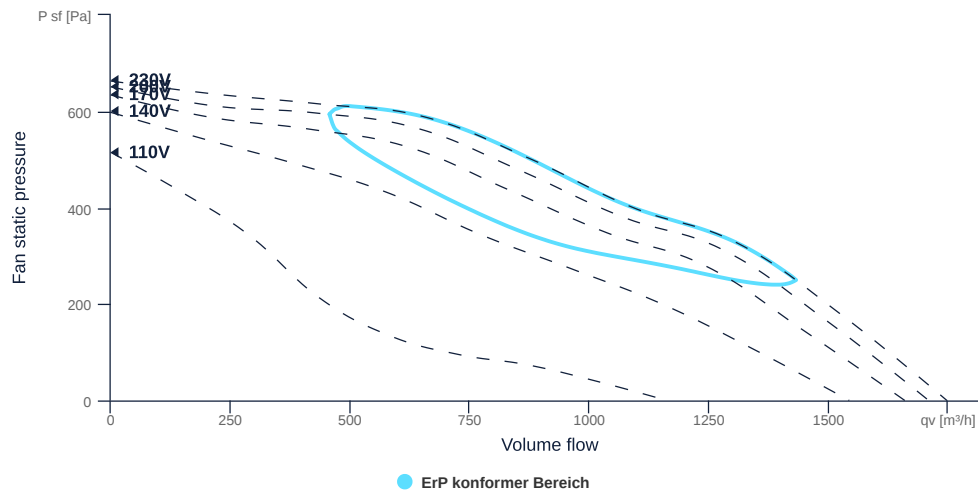
137881

- Centrifugal fan with backward curved impeller
- Variable discharge direction right / left / linear
- Double wall housing made of galvanized steel sheet, insulated
- Robust single-phase AC motor, voltage controllable
- Integrated thermal switch
- With bottom tray



## FAN CURVES

Name	Value	Unit
Volume flow	0	m³/h
Pressure	0	Pa



to the product detail page

# MPC 225 E2 21

137881

**ruck**

## GENERAL DATA

Name	Value	Unit	Formula symbol
Labeling	CE, UKCA		
Duct size	-		WxHduct
Pipe connection size (DN)	DN355		DN
Rated voltage (entire device)	230	V	U <sub>rated</sub>
Phases (entire device)	1~		phase
Electrical protection (entire device)	6 A		fuse
Housing material	Galvanized steel		matcasing
Impeller material	Coated steel		matimpeller
IP-protection class (entire device)	IPX4		IP <sub>compl</sub>
IP-Protection class (terminal box)	IP54		IP <sub>ebox</sub>
Weight	32.9	kg	m
Nominal air flow rate, nominal point m <sup>3</sup> /h	1432.8	m <sup>3</sup> /h	q <sub>v,nom</sub>
Nominal external pressure, static	250	Pa	p <sub>s,nom</sub>
Fan type	Radial		Fan <sub>type</sub>
Category / Installation situation	A		cat

## ERP DATA (LOT 6)

Name	Value	Unit	Formula symbol
Nominal air flow rate, nominal point m <sup>3</sup> /s	0.4	m <sup>3</sup> /s	q <sub>v,nom</sub>
Actual electrical input power, nominal point	0.29	kW	P <sub>e,nom</sub>
Face velocity, nominal point	2.95	m/s	v <sub>nom</sub>
Nominal external pressure, static	250	Pa	p <sub>s,nom</sub>
static efficiency of the extract fan, nominal point	34.34	%	η <sub>es,EHA</sub>
Highest external air leakage rate	0.19	%	
Enclosure sound level, nominal point	57.63	dba	LWA2
Rating	Product is compliant 2018		



to the product detail page

## MAXIMAL DATA

Name	Value		Unit	Formula symbol
	50 Hz	60 Hz		
Max. power consumption (device)	303	424	W	P <sub>ed, max</sub>
Max. operating current (device)	2.28	2.5	A	I <sub>ed, max</sub>
Max. speed	2910	3480	1/min	n <sub>max</sub>
Max. stat. efficiency	40.7	46.5	%	η <sub>es</sub>
Max. fan efficiency	40.8	46.9	%	η <sub>e</sub>
Max. flowrate	1740	2010	m³/h	q <sub>v, max</sub>
Max. stat pressure	660	950	Pa	p <sub>sf, max</sub>
Max. medium temperature	80	60	°C	T <sub>m, max</sub>
Max. environment temperature	80	60	°C	T <sub>amb, max</sub>
Min. environment temperature	-25	-25	°C	T <sub>amb, min</sub>
Min. voltage	110	110	V	U <sub>min</sub>

## MOTOR DATA

Name	Value		Unit	Formula symbol
	50 Hz	60 Hz		
Rated frequency (device)		50		f
Motor type		AC 1~		phase
Control type		stepless-controlled		ctrltype
Installation type		IRM (In)		install
Rotation direction		right		rotation
Isolation class		ISO F		ISOclass
Motor-protection		TAO		protectmotor
Protection class		IP54		IP <sub>motor</sub>
Is pole-changeable		No		polexch
Type of power supply		AC 1~		pwrSupmotor
Capacity capacitor		8	μF	C <sub>cond</sub>
Voltage capacitor		400	V	V <sub>Ucond</sub>
Number of poles (1)		2.000000		num poles <sub>w1</sub>
Rated voltage	230		V	U <sub>rated, f1</sub>
Rated current	1.6		A	I <sub>rated, f1</sub>
Shaft power	250		W	P <sub>out, f1</sub>
Speed	2720		1/min	n <sub>f1</sub>
Min. temperature	-25		°C	T <sub>motor, min</sub>
Cos Phi	0.990000	0.000000		cos φ
UL-Certification motor		None		ULcert



to the product detail page