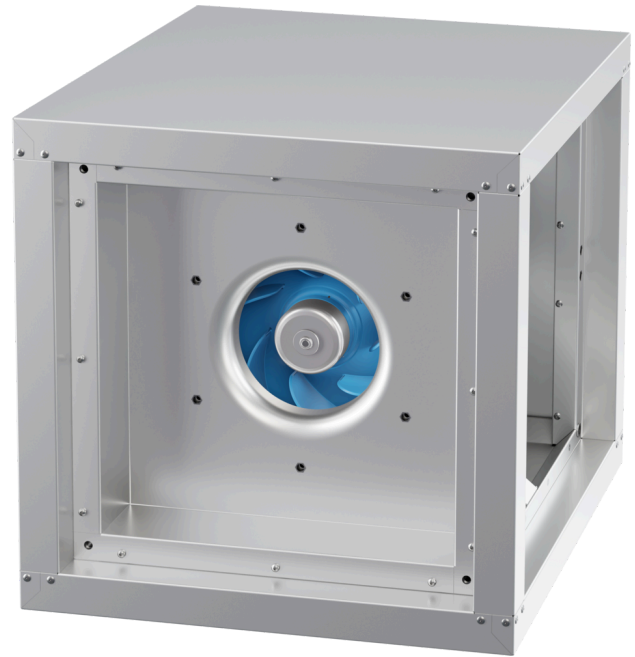


MPC 225 EC O K 01

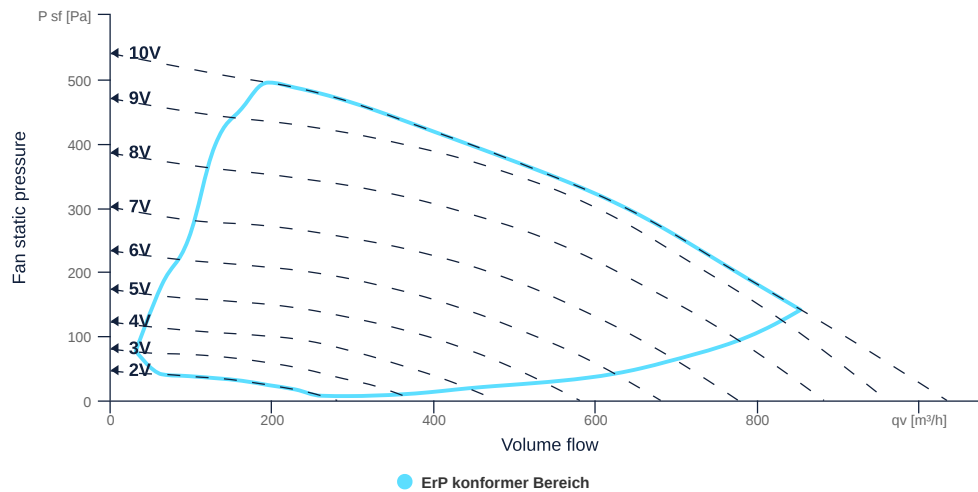
166481

- Centrifugal fan with backward curved impeller
- Variable discharge direction right / left / linear
- Double wall housing made of galvanized steel sheet, insulated
- Highly efficient EC motor, steplessly controllable
- Internal electronic temperature monitoring
- With bottom tray



FAN CURVES

Name	Value	Unit
Volume flow	0	m³/h
Pressure	0	Pa



to the product detail page

MPC 225 EC O K 01

166481

GENERAL DATA

Name	Value	Unit	Formula symbol
Labeling	CE, UKCA		
Duct size	-		WxHduct
Pipe connection size (DN)	-		DN
Rated voltage (entire device)	230	V	U _{rated}
Phases (entire device)	1~		phase
Electrical protection (entire device)	6 A		fuse
Housing material	Galvanized steel		matcasing
Impeller material	Plastic		matimpeller
IP-protection class (entire device)	IPX4		IP _{compl}
IP-Protection class (terminal box)	IP44		IP _{ebox}
Weight	23.1	kg	m
Nominal air flow rate, nominal point m ³ /h	525.6	m ³ /h	q _{vnom}
Nominal external pressure, static	243.7	Pa	p _{s,nom}
Fan type	Radial		Fan _{type}
Category / Installation situation	A		cat

ERP DATA (LOT 6)

Name	Value	Unit	Formula symbol
Nominal air flow rate, nominal point m ³ /s	0.15	m ³ /s	q _{v,nom}
Actual electrical input power, nominal point	0.07	kW	P _{e,nom}
Face velocity, nominal point	1	m/s	v _{nom}
Nominal external pressure, static	243.7	Pa	p _{s,nom}
supply air fan static efficiency, nominal point	49.5	%	η _{es,SUP}
Highest external air leakage rate	0.5	%	
Enclosure sound level, nominal point	51	dB(A)	L _{WA2}
Rating	Product is compliant 2018		



to the product detail page

MPC 225 EC O K 01

166481

MAXIMAL DATA

Name	Value		Unit	Formula symbol
	50 Hz	60 Hz		
Max. power consumption (device)	111	111	W	$P_{ed, max}$
Max. operating current (device)	0.96	0.96	A	$I_{ed, max}$
Max. speed	2940	2940	1/min	n_{max}
Max. stat. efficiency	46.5	46.5	%	η_{es}
Max. fan efficiency	46.5	46.5	%	η_e
Max. flowrate	960	960	m ³ /h	q_v, max
Max. stat pressure	570	570	Pa	$p_{sf, max}$
Max. medium temperature	60	60	°C	T_m, max
Max. environment temperature	60	60	°C	$T_{amb, max}$
Min. environment temperature	-30	-30	°C	$T_{amb, min}$

MOTOR DATA

Name	Value		Unit	Formula symbol
	50 Hz	60 Hz		
Rated frequency (device)		50		f
Motor type		EC		phase
Control type		stepless-controlled		ctrltype
Installation type		ORM (Out)		install
Rotation direction		right		rotation
Isolation class		ISO F		ISOclass
Motor-protection		TEC		protectmotor
Protection class		IP54		IPmotor
Is pole-changeable		No		polexch
Type of power supply		AC 1~		pwsupmotor
Rated voltage	230		V	$U_{rated, f1}$
Rated current	0.89		A	$I_{rated, f1}$
Shaft power	113		W	$P_{out, f1}$
Speed	2908		1/min	n_{f1}
Efficiency	48.7		%	$\eta_m, f1$
UL-Certification motor		None		ULcert



to the product detail page