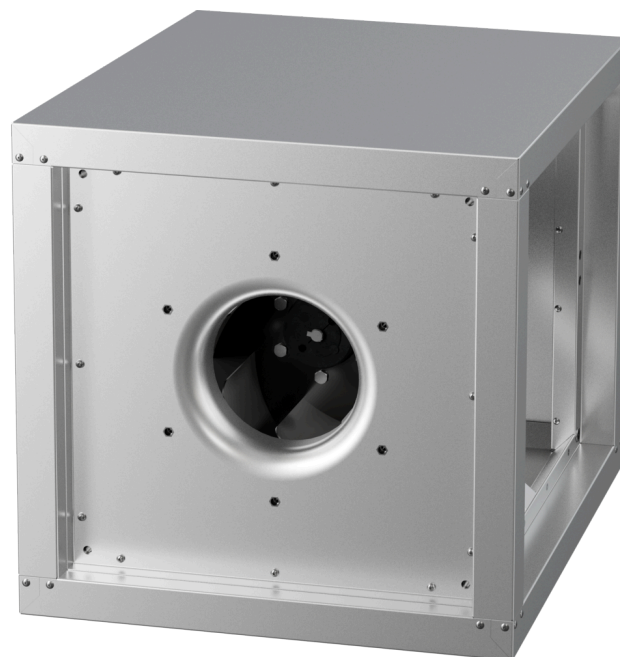


MPC 280 D2 40

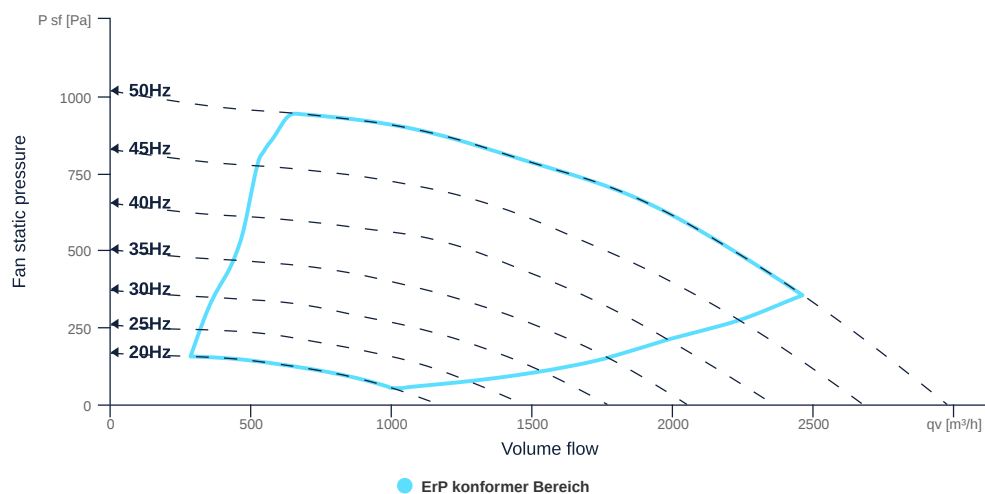
157184

- Centrifugal fan with backward curved impeller
- Variable discharge direction right / left / linear
- Double wall housing made of galvanized steel sheet, insulated
- Efficient IE3 motor, frequency controllable
- Motor protection via frequency converter or motor protection switch
- With bottom tray



FAN CURVES

Name	Value	Unit
Volume flow	0	m³/h
Pressure	0	Pa



to the product detail page

MPC 280 D2 40

157184

GENERAL DATA

Name	Value	Unit	Formula symbol
Labeling	CE, UKCA		
Duct size	-		WxH _{duct}
Pipe connection size (DN)	DN355		DN
Rated voltage (entire device)	400	V	U _{rated}
Phases (entire device)	3~		phase
Electrical protection (entire device)	6 A		fuse
Housing material	Galvanized steel		mat _{casing}
Impeller material	Coated steel		mat _{impeller}
Weight	36	kg	m
Nominal air flow rate, nominal point m ³ /h	2458.8	m ³ /h	q _{v,nom}
Nominal external pressure, static	354	Pa	p _{s,nom}
Fan type	Radial		Fan _{type}
Category / Installation situation	A		cat

ERP DATA (LOT 6)

Name	Value	Unit	Formula symbol
Nominal air flow rate, nominal point m ³ /s	0.68	m ³ /s	q _{v,nom}
Actual electrical input power, nominal point	0.62	kW	P _{e,nom}
Face velocity, nominal point	5.06	m/s	v _{nom}
Nominal external pressure, static	354	Pa	p _{s,nom}
static efficiency of the extract fan, nominal point	39.04	%	η _{es,EHA}
Highest external air leakage rate	0.11	%	
Enclosure sound level, nominal point	65.35	dba	LWA2
Rating	Product is compliant 2018		

MAXIMAL DATA

Name	Value	Unit	Formula symbol
Max. power consumption (device)	686	W	P _{ed,max}
Max. operating current (device)	1.23	A	I _{ed,max}
Max. speed	2925	1/min	n _{max}
Max. stat. efficiency	47.5	%	η _{es}
Max. fan efficiency	48.2	%	η _e
Max. flowrate	2970	m ³ /h	q _{w,max}
Max. stat pressure	1010	Pa	p _{sf,max}
Max. medium temperature	60	°C	T _{m,max}
Max. environment temperature	60	°C	T _{amb,max}
Min. environment temperature	-20	°C	T _{amb,min}



to the product detail page

MPC 280 D2 40

157184

ruck

MOTOR DATA

Name	Value		Unit	Formula symbol
	50 Hz	60 Hz		
Rated frequency (device)		50		f
Motor type		AC 3~		phase
Control type		frequency-controlled		ctrltype
Installation type		IRM (In)		install
Rotation direction		right		rotation
Isolation class		ISO F		ISOclass
Protection class		IP55		IPmotor
Is pole-changeable		No		polexch
Type of power supply		AC 3~		pwrsupmotor
Number of poles (1)		2.000000		num poles _{w1}
Connection	Δ	Δ		wiring _{w1}
Connection (wiring 2)	Y	Y		wiring _{w2}
Rated voltage	230	265	V	U _{rated, f1}
Rated voltage (wiring 2)	400	460	V	U _{rated, f2}
Rated current	2.26	2.04	A	I _{rated, f1}
Rated current (wiring 2)	1.31	1.18	A	I _{rated, f2}
Shaft power	550	550	W	P _{out, f1}
Shaft power (wiring 2)	550	550	W	P _{out, f2}
Speed	2808	3433	1/min	n _{f1}
Speed (wiring 2)	2808	3433	1/min	n _{f2}
Efficiency	77.8	76.8	%	η _{m, f1}
Efficiency (wiring 2)	77.8	76.8	%	η _{m, f2}
Efficiency class	IE3	IE3		IE _{motor}
Min. temperature	-30	-30	°C	T _{motor, min}
Cos Phi	0.800000	0.780000		cos φ
UL-Certification motor		None		ULcert



to the product detail page