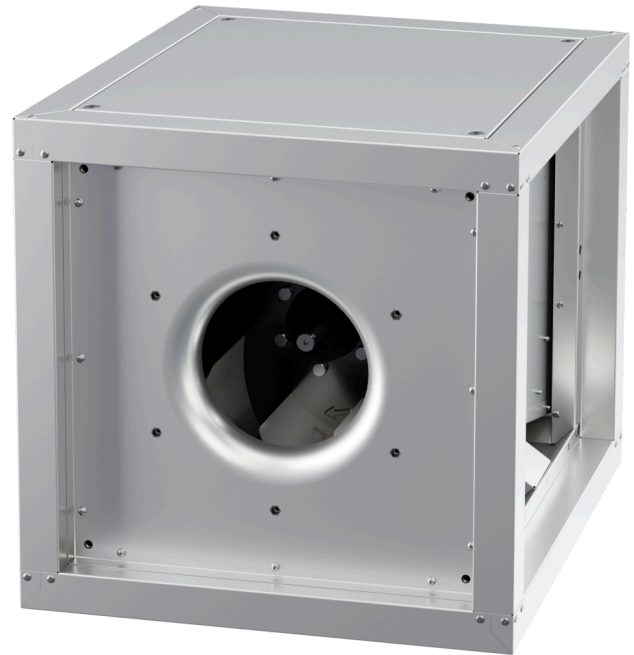


# MPC 315 EC T30

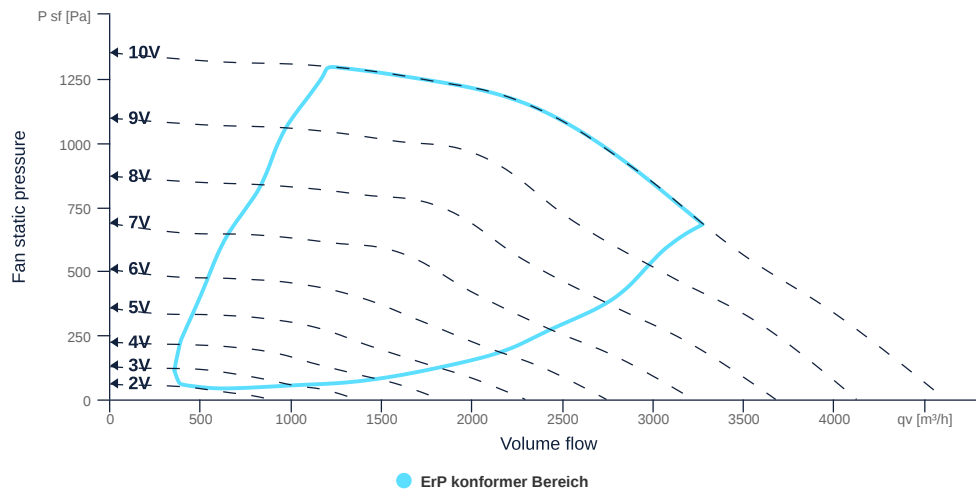
149264

- Backward curved centrifugal impeller
- Removable side walls, variable discharge direction
- Sheet steel housing double-walled, 30 mm mineral wool
- EC motor outside the airflow, controllable
- Conveyed medium temperature up to 120 °C in continuous operation
- Housing bottom designed with integrated drain



## FAN CURVES

Name	Value	Unit
Volume flow	0	m³/h
Pressure	0	Pa



to the product detail page

# MPC 315 EC T30

149264

ruck

## GENERAL DATA

Name	Value	Unit	Formula symbol
Labeling	CE, UKCA		
Duct size	-		WxHduct
Pipe connection size (DN)	DN355		DN
Rated voltage (entire device)	230	v	U <sub>rated</sub>
Phases (entire device)	1~		phase
Electrical protection (entire device)	10 A		fuse
Housing material	Galvanized steel		mat <sub>casing</sub>
Impeller material	Coated steel		mat <sub>impeller</sub>
IP-protection class (entire device)	IPX4		IP <sub>compl</sub>
IP-Protection class (terminal box)	IP44		IP <sub>ebox</sub>
Weight	36	kg	m
Nominal air flow rate, nominal point m <sup>3</sup> /h	3272.4	CmH	q <sub>v,nom</sub>
Nominal external pressure, static	682	Pa	p <sub>s,nom</sub>
Fan type	Radial		Fan <sub>type</sub>
Category / Installation situation	A		cat

## ERP DATA (LOT 6)

Name	Value	Unit	Formula symbol
Nominal air flow rate, nominal point m <sup>3</sup> /s	0.91	CmS	q <sub>v,nom</sub>
Actual electrical input power, nominal point	1.41	kw	P <sub>e,nom</sub>
Face velocity, nominal point	6.73	mps	V <sub>nom</sub>
Nominal external pressure, static	682	Pa	p <sub>s,nom</sub>
static efficiency of the extract fan, nominal point	44.11	p	η <sub>es,EHA</sub>
Highest external air leakage rate	0.08	p	
Enclosure sound level, nominal point	79.8	db	L <sub>WA2</sub>
Rating	Product is compliant 2018		



to the product detail page

# MPC 315 EC T30

149264

## MAXIMAL DATA

Name	Value		Unit	Formula symbol
	50 Hz	60 Hz		
Max. power consumption (device)	1408	1408	w	P <sub>ed, max</sub>
Max. operating current (device)	9.9	9.9	A	I <sub>ed, max</sub>
Max. speed	3100	3100	rpm	n <sub>max</sub>
Max. stat. efficiency	52.4	52.4	p	η <sub>es</sub>
Max. fan efficiency	53.3	53.3	p	η <sub>e</sub>
Max. flowrate	4610	4610	CmH	Q <sub>v, max</sub>
Max. stat pressure	1350	1350	Pa	p <sub>sf, max</sub>
Max. medium temperature	120	120	°C	T <sub>m, max</sub>
Max. environment temperature	50	50	°C	T <sub>amb, max</sub>
Min. environment temperature	-20	-20	°C	T <sub>amb, min</sub>

## MOTOR DATA

Name	Value		Unit	Formula symbol
	50 Hz	60 Hz		
Rated frequency (device)		50		f
Motor type		EC		phase
Control type		stepless-controlled		ctrltype
Installation type		IRM (In)		install
Rotation direction		right		rotation
Isolation class		ISO F		ISOclass
Motor-protection		TEC		protectmotor
Protection class		IP54		IP <sub>motor</sub>
Is pole-changeable		No		polexch
Type of power supply		AC 1~		pwr <sub>sup</sub> motor
Rated voltage	230		v	U <sub>rated, f1</sub>
Rated current	9.5		A	I <sub>rated, f1</sub>
Nominal power	1200		w	P <sub>a</sub>
Speed	3100		rpm	n <sub>f1</sub>
UL-Certification motor		None		ULcert



to the product detail page