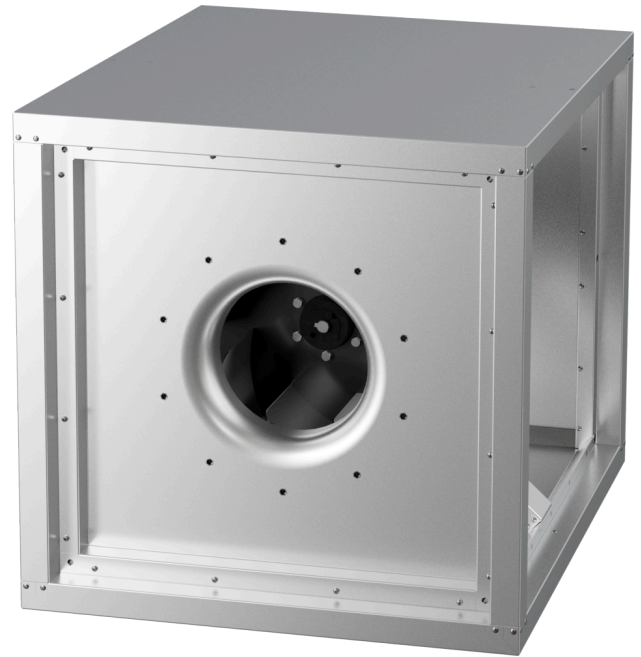


# MPC 355 D4 40

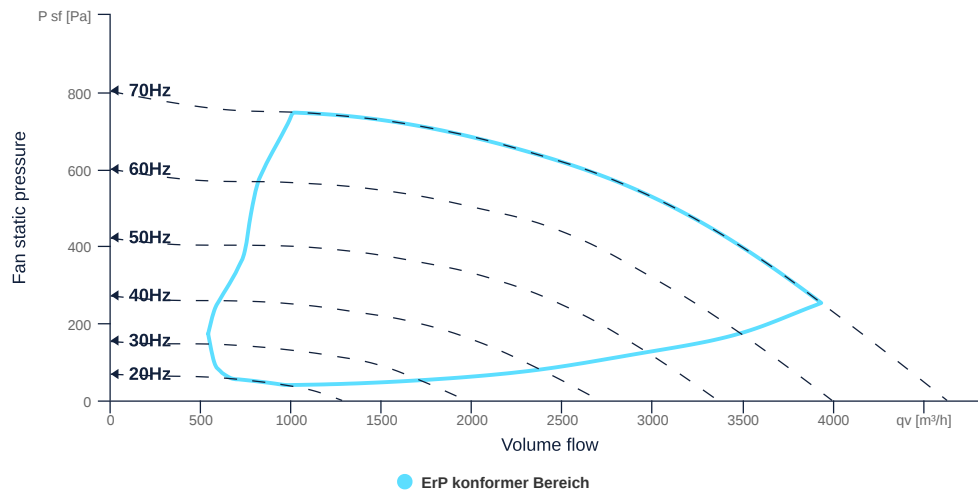
157194

- Centrifugal fan with backward curved impeller
- Variable discharge direction right / left / linear
- Double wall housing made of galvanized steel sheet, insulated
- Efficient IE3 motor, frequency controllable
- Motor protection via frequency converter or motor protection switch
- With bottom tray



## FAN CURVES

Name	Value	Unit
Volume flow	0	m³/h
Pressure	0	Pa



to the product detail page

# MPC 355 D4 40

157194

## GENERAL DATA

Name	Value	Unit	Formula symbol
Labeling	CE, UKCA		
Duct size	-		WxH <sub>duct</sub>
Pipe connection size (DN)	DN500		DN
Rated voltage (entire device)	400	V	U <sub>rated</sub>
Phases (entire device)	3~		phase
Electrical protection (entire device)	6 A		fuse
Housing material	Galvanized steel		mat <sub>casing</sub>
Impeller material	Coated steel		mat <sub>impeller</sub>
Weight	63	kg	m
Nominal air flow rate, nominal point m <sup>3</sup> /h	3931.2	m <sup>3</sup> /h	q <sub>v,nom</sub>
Nominal external pressure, static	253	Pa	p <sub>s,nom</sub>
Fan type	Radial		Fan <sub>type</sub>
Category / Installation situation	A		cat

## ERP DATA (LOT 6)

Name	Value	Unit	Formula symbol
Nominal air flow rate, nominal point m <sup>3</sup> /s	1.09	m <sup>3</sup> /s	q <sub>v,nom</sub>
Actual electrical input power, nominal point	0.7	kW	P <sub>e,nom</sub>
Face velocity, nominal point	3.39	m/s	v <sub>nom</sub>
Nominal external pressure, static	253	Pa	p <sub>s,nom</sub>
static efficiency of the extract fan, nominal point	39.77	%	η <sub>es,EHA</sub>
Highest external air leakage rate	0.14	%	
Enclosure sound level, nominal point	59.44	dba	LWA2
Rating	Product is compliant 2018		

## MAXIMAL DATA

Name	Value	Unit	Formula symbol
Max. power consumption (device)	821	W	P <sub>ed,max</sub>
Max. operating current (device)	1.41	A	I <sub>ed,max</sub>
Max. speed	2050	1/min	n <sub>max</sub>
Max. stat. efficiency	54.1	%	η <sub>es</sub>
Max. fan efficiency	54.6	%	η <sub>e</sub>
Max. flowrate	4620	m <sup>3</sup> /h	q <sub>w,max</sub>
Max. stat pressure	800	Pa	p <sub>sf,max</sub>
Max. medium temperature	60	°C	T <sub>m,max</sub>
Max. environment temperature	60	°C	T <sub>amb,max</sub>
Min. environment temperature	-20	°C	T <sub>amb,min</sub>



to the product detail page

## MOTOR DATA

Name	Value		Unit	Formula symbol
	50 Hz	60 Hz		
Rated frequency (device)		50		f
Motor type		AC 3~		phase
Control type		frequency-controlled		ctrltype
Installation type		IRM (In)		install
Rotation direction		right		rotation
Isolation class		ISO F		ISOclass
Protection class		IP55		IPmotor
Is pole-changeable		No		polexch
Type of power supply		AC 3~		pwr <sup>sup</sup> motor
Number of poles (1)		4.000000		num poles <sub>Sw1</sub>
Connection	Δ	Δ		wiring <sub>w1</sub>
Connection (wiring 2)	Y	Y		wiring <sub>w2</sub>
Rated voltage	230	265	V	U <sub>rated, f1</sub>
Rated voltage (wiring 2)	400	460	V	U <sub>rated, f2</sub>
Rated current	2.37	2.07	A	I <sub>rated, f1</sub>
Rated current (wiring 2)	1.37	1.2	A	I <sub>rated, f2</sub>
Shaft power	550	550	W	P <sub>out, f1</sub>
Shaft power (wiring 2)	550	550	W	P <sub>out, f2</sub>
Speed	1455	1762	1/min	n <sub>f1</sub>
Speed (wiring 2)	1455	1762	1/min	n <sub>f2</sub>
Efficiency	80.8	81.1	%	η <sub>m, f1</sub>
Efficiency (wiring 2)	80.8	81.1	%	η <sub>m, f2</sub>
Efficiency class	IE3	IE3		IE <sub>motor</sub>
Min. temperature	-20	-20	°C	T <sub>motor, min</sub>
UL-Certification motor		None		ULcert



to the product detail page