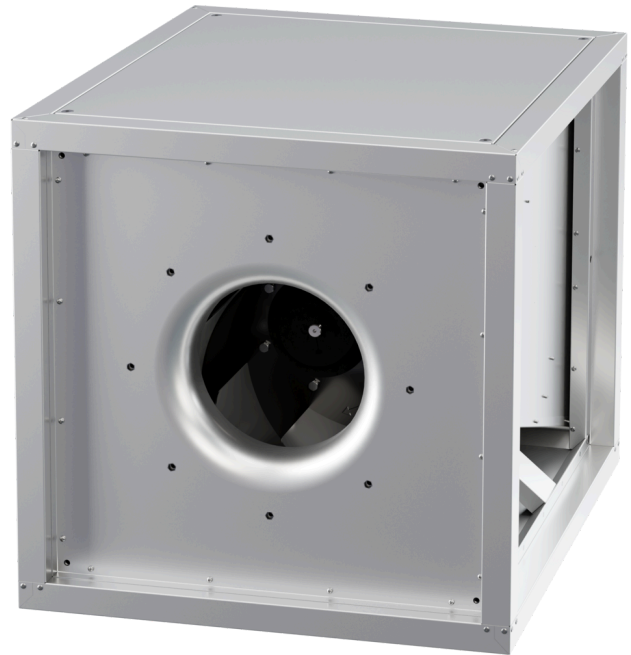


MPC 355 EC T30

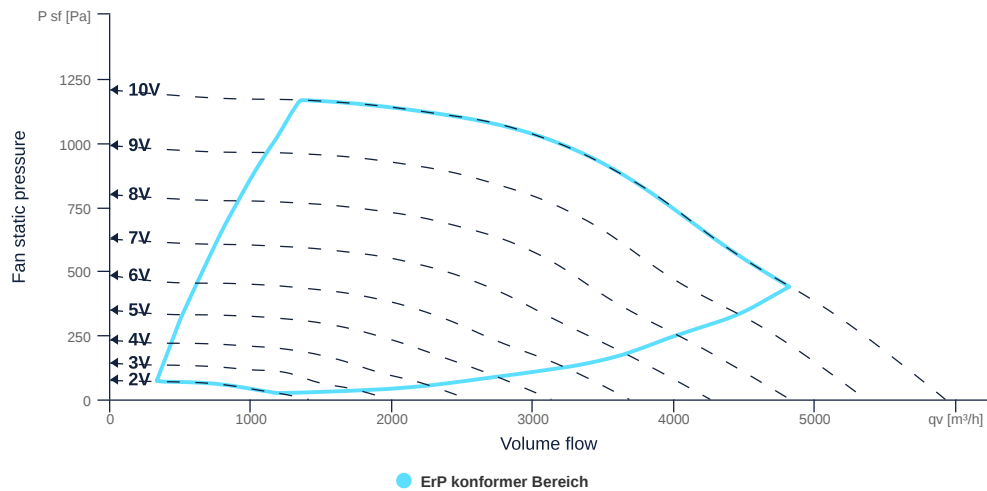
149321

- Backward curved centrifugal impeller
- Removable side walls, variable discharge direction
- Sheet steel housing double-walled, 30 mm mineral wool
- EC motor outside the airflow, controllable
- Conveyed medium temperature up to 120 °C in continuous operation
- Housing bottom designed with integrated drain



FAN CURVES

Name	Value	Unit
Volume flow	0	m³/h
Pressure	0	Pa



to the product detail page

MPC 355 EC T30

149321

ruck

GENERAL DATA

Name	Value	Unit	Formula symbol
Labeling	CE, UKCA		
Duct size	-		WxHduct
Pipe connection size (DN)	DN500		DN
Rated voltage (entire device)	230	v	U _{rated}
Phases (entire device)	1~		phase
Electrical protection (entire device)	16 A		fuse
Housing material	Galvanized steel		mat _{casing}
Impeller material	Coated steel		mat _{impeller}
IP-protection class (entire device)	IPX4		IP _{compl}
IP-Protection class (terminal box)	IP44		IP _{ebox}
Weight	58	kg	m
Nominal air flow rate, nominal point m ³ /h	4816.8	CmH	q _{v,nom}
Nominal external pressure, static	439	Pa	p _{s,nom}
Fan type	Radial		Fan _{type}
Category / Installation situation	A		cat

ERP DATA (LOT 6)

Name	Value	Unit	Formula symbol
Nominal air flow rate, nominal point m ³ /s	1.34	CmS	q _{v,nom}
Actual electrical input power, nominal point	1.34	kw	P _{e,nom}
Face velocity, nominal point	4.16	mps	V _{nom}
Nominal external pressure, static	439	Pa	p _{s,nom}
static efficiency of the extract fan, nominal point	43.83	p	η _{es,EHA}
Highest external air leakage rate	0.11	p	
Enclosure sound level, nominal point	74.35	db	L _{WA2}
Rating	Product is compliant 2018		



to the product detail page

MPC 355 EC T30

149321

MAXIMAL DATA

Name	Value		Unit	Formula symbol
	50 Hz	60 Hz		
Max. power consumption (device)	1500	1500	w	P _{ed, max}
Max. operating current (device)	10.73	10.73	A	I _{ed, max}
Max. speed	2550	2550	rpm	n _{max}
Max. stat. efficiency	57.3	57.3	p	η _{es}
Max. fan efficiency	57.6	57.6	p	η _e
Max. flowrate	5920	5920	CmH	q _{v, max}
Max. stat pressure	1200	1200	Pa	p _{sf, max}
Max. medium temperature	120	120	°C	T _{m, max}
Max. environment temperature	50	50	°C	T _{amb, max}
Min. environment temperature	-20	-20	°C	T _{amb, min}

MOTOR DATA

Name	Value		Unit	Formula symbol
	50 Hz	60 Hz		
Rated frequency (device)		50		f
Motor type		EC		phase
Control type		stepless-controlled		ctrltype
Installation type		IRM (In)		install
Rotation direction		right		rotation
Isolation class		ISO F		ISOclass
Motor-protection		TEC		protect _{motor}
Protection class		IP54		IP _{motor}
Is pole-changeable		No		polexch
Type of power supply		AC 1~		pwr _{sup} _{motor}
Rated voltage	230		v	U _{rated, f1}
Rated current	9.5		A	I _{rated, f1}
Nominal power	1200		w	P _a
Speed	3100		rpm	n _{f1}
UL-Certification motor		None		ULcert



to the product detail page