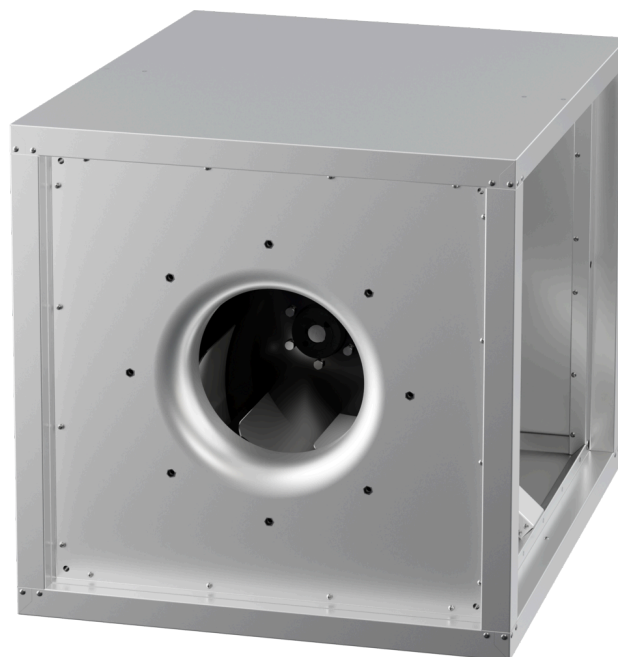


# MPC 400 D6 40

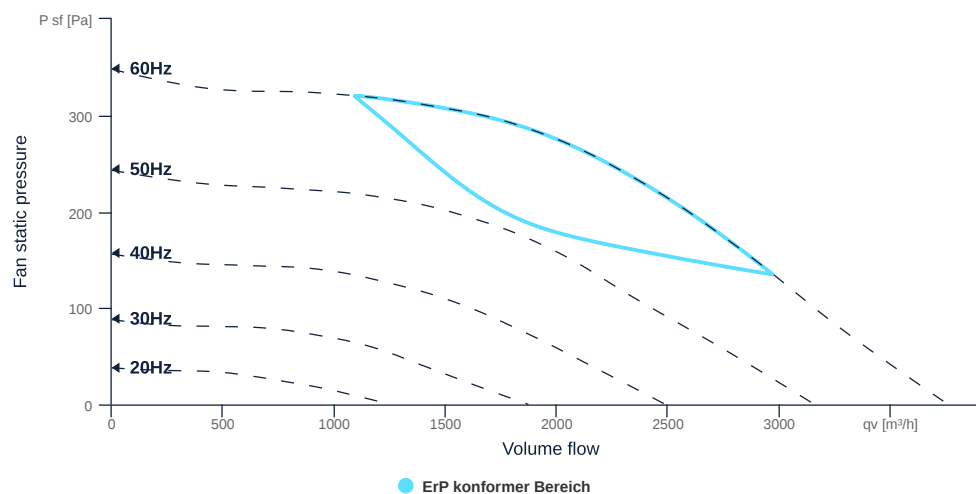
164802

- Centrifugal fan with backward curved impeller
- Variable discharge direction right / left / linear
- Double wall housing made of galvanized steel sheet, insulated
- Efficient IE3 motor, frequency controllable
- Motor protection via frequency converter or motor protection switch
- With bottom tray



## FAN CURVES

Name	Value	Unit
Volume flow	0	m³/h
Pressure	0	Pa



to the product detail page

# MPC 400 D6 40

164802

**ruck**

## GENERAL DATA

Name	Value	Unit	Formula symbol
Labeling	CE, UKCA		
Duct size	-		WxHduct
Pipe connection size (DN)	DN500		DN
Rated voltage (entire device)	400	V	U <sub>rated</sub>
Phases (entire device)	3~		phase
Electrical protection (entire device)	6 A		fuse
Housing material	Galvanized steel		mat <sub>casing</sub>
Impeller material	Coated steel		mat <sub>impeller</sub>
IP-protection class (entire device)	IPX4		IP <sub>compl</sub>
IP-Protection class (terminal box)	IP55		IP <sub>ebox</sub>
Weight	75.9	kg	m
Nominal air flow rate, nominal point m <sup>3</sup> /h	2970	m <sup>3</sup> /h	q <sub>v,nom</sub>
Nominal external pressure, static	135	Pa	p <sub>s,nom</sub>
Fan type	Radial		Fan <sub>type</sub>
Category / Installation situation	A		cat

## ERP DATA (LOT 6)

Name	Value	Unit	Formula symbol
Nominal air flow rate, nominal point m <sup>3</sup> /s	0.83	m <sup>3</sup> /s	q <sub>v,nom</sub>
Actual electrical input power, nominal point	0.32	kW	P <sub>e,nom</sub>
Face velocity, nominal point	2.56	m/s	v <sub>nom</sub>
Nominal external pressure, static	135	Pa	p <sub>s,nom</sub>
static efficiency of the extract fan, nominal point	34.93	%	η <sub>es,EHA</sub>
Highest external air leakage rate	0.18	%	
Enclosure sound level, nominal point	57.98	dba	LWA2
Rating	Product is compliant 2018		



to the product detail page

# MPC 400 D6 40

164802

**ruck**

## MAXIMAL DATA

Name	Value	Unit	Formula symbol
Max. power consumption (device)	329	W	$P_{ed, max}$
Max. operating current (device)	2.09	A	$I_{ed, max}$
Max. speed	1200	1/min	$n_{max}$
Max. stat. efficiency	44.5	%	$\eta_{es}$
Max. fan efficiency	44.7	%	$\eta_e$
Max. flowrate	3760	m <sup>3</sup> /h	$Q_v, max$
Max. stat pressure	350	Pa	$p_{sf, max}$
Max. medium temperature	60	°C	$T_m, max$
Max. environment temperature	60	°C	$T_{amb, max}$
Min. environment temperature	-20	°C	$T_{amb, min}$



[to the product detail page](#)

# MPC 400 D6 40

164802

**ruck**

## MOTOR DATA

Name	Value		Unit	Formula symbol
	50 Hz	60 Hz		
Rated frequency (device)		50		f
Motor type		AC 3~		phase
Control type		frequency-controlled		ctrltype
Installation type		IRM (In)		install
Rotation direction		right		rotation
Isolation class		ISO F		ISOclass
Protection class		IP55		IPmotor
Is pole-changeable		No		polexch
Type of power supply		AC 3~		pwrsupmotor
Number of poles (1)		6.000000		num polesw1
Connection	$\Delta$	Y		wiringw1
Connection (wiring 2)	Y			wiringw2
Rated voltage	230	460	V	U <sub>rated, f1</sub>
Rated voltage (wiring 2)	400		V	U <sub>rated, f2</sub>
Rated current	4.68	2.35	A	I <sub>rated, f1</sub>
Rated current (wiring 2)	2.69		A	I <sub>rated, f2</sub>
Shaft power	1100	1100	W	P <sub>out, f1</sub>
Shaft power (wiring 2)	1100		W	P <sub>out, f2</sub>
Speed	945	1150	1/min	n <sub>f1</sub>
Speed (wiring 2)	945		1/min	n <sub>f2</sub>
Starting current	22.9	13.4	A	I <sub>start, f1</sub>
Starting current (wiring 2)	13.2		A	I <sub>start, f2</sub>
Efficiency	81	84	%	$\eta_m, f1$
Efficiency (wiring 2)	81		%	$\eta_m, f2$
Efficiency class	IE3			IE <sub>motor</sub>
Min. temperature	-20	-20	°C	T <sub>motor, min</sub>
Cos Phi	0.730000	0.700000		cos $\varphi$
UL-Certification motor		UL recognized		ULcert



to the product detail page