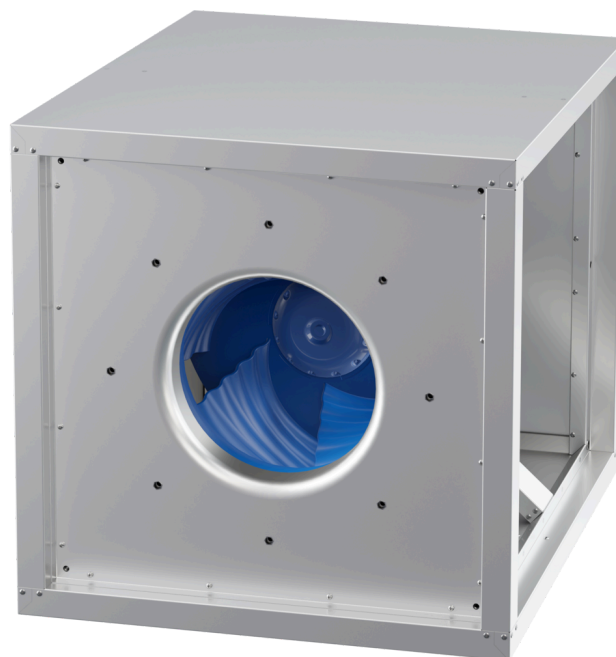


MPC 450 EC 41

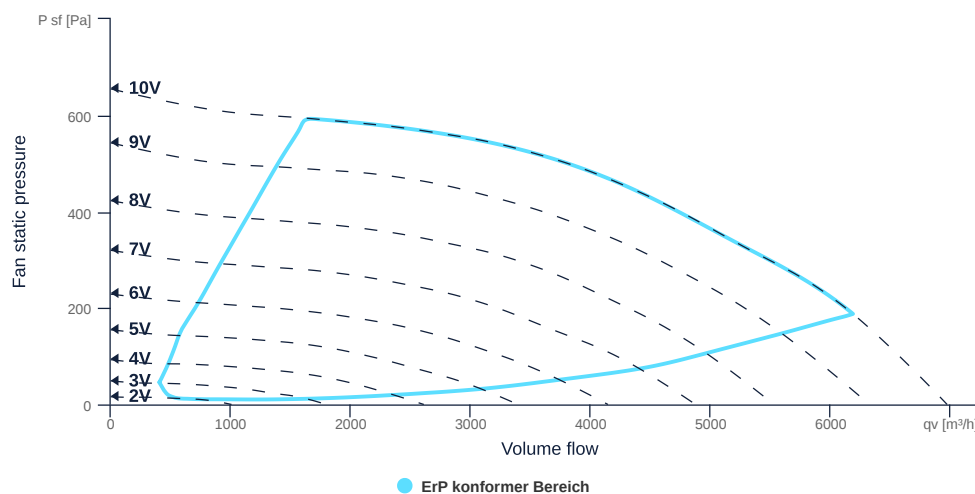
164101

- Centrifugal fan with backward curved impeller
- Variable discharge direction right / left / linear
- Double wall housing made of galvanized steel sheet, insulated
- Highly efficient EC motor, steplessly controllable
- Internal electronic temperature monitoring
- With bottom tray



FAN CURVES

Name	Value	Unit
Volume flow	0	m³/h
Pressure	0	Pa



to the product detail page

MPC 450 EC 41

164101

ruck

GENERAL DATA

Name	Value	Unit	Formula symbol
Labeling	CE, UKCA		
Duct size	-		WxH _{duct}
Pipe connection size (DN)	DN500		DN
Rated voltage (entire device)	230	V	U _{rated}
Phases (entire device)	1~		phase
Electrical protection (entire device)	6 A		fuse
Housing material	Galvanized steel		mat _{casing}
Impeller material	Plastic		mat _{impeller}
Weight	51.6	kg	m
Nominal air flow rate, nominal point m ³ /h	4104	m ³ /h	q _{v,nom}
Nominal external pressure, static	474.1	Pa	p _{s,nom}
Fan type	Radial		Fan _{type}
Category / Installation situation	A		cat

ERP DATA (LOT 6)

Name	Value	Unit	Formula symbol
Nominal air flow rate, nominal point m ³ /s	1.14	m ³ /s	q _{v,nom}
Actual electrical input power, nominal point	0.86	kW	P _{e,nom}
Face velocity, nominal point	3.5	m/s	v _{nom}
Nominal external pressure, static	474.1	Pa	p _{s,nom}
supply air fan static efficiency, nominal point	64.8	%	η _{es,SUP}
Highest external air leakage rate	0.13	%	
Enclosure sound level, nominal point	64	dB(A)	L _{WA2}
Rating	Product is compliant 2018		



to the product detail page

MPC 450 EC 41

164101

ruck

MAXIMAL DATA

Name	Value		Unit	Formula symbol
	50 Hz	60 Hz		
Max. power consumption (device)	860	860	W	P _{ed, max}
Max. operating current (device)	3.94	3.94	A	I _{ed, max}
Max. speed	1500	1500	1/min	n _{max}
Max. stat. efficiency	59.3	59.3	%	η _{es}
Max. fan efficiency	59.9	59.9	%	η _e
Max. flowrate	6970	6970	m ³ /h	q _{v, max}
Max. stat pressure	655	655	Pa	p _{sf, max}
Max. medium temperature	40	40	°C	T _{m, max}
Max. environment temperature	40	40	°C	T _{amb, max}
Min. environment temperature	-20	-20	°C	T _{amb, min}

MOTOR DATA

Name	Value		Unit	Formula symbol
	50 Hz	60 Hz		
Rated frequency (device)		50		f
Motor type		EC		phase
Control type		stepless-controlled		ctrltype
Installation type		ORM (Out)		install
Rotation direction		right		rotation
Isolation class		ISO F		ISOclass
Motor-protection		TEC		protectmotor
Protection class		IP55		IP _{motor}
Is pole-changeable		No		polexch
Type of power supply		AC 1~		pwr _{sup} motor
Rated voltage	230	230	V	U _{rated, f1}
Rated current	5.2	5.2	A	I _{rated, f1}
Shaft power	1000	1000	W	P _{out, f1}
Speed	1500	1500	1/min	n _{f1}
Efficiency	74.3	74.3	%	η _{m, f1}
Min. temperature	-20		°C	T _{motor, min}
UL-Certification motor		UL recognized		ULcert



to the product detail page