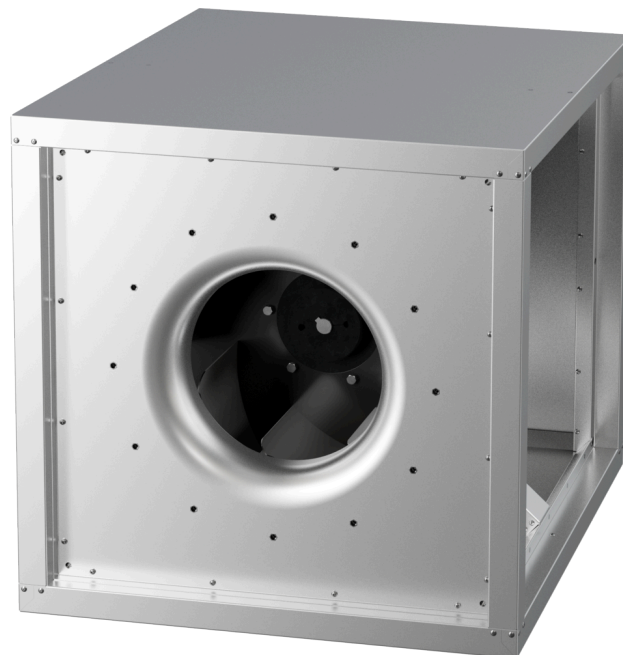


MPC 500 D4 40

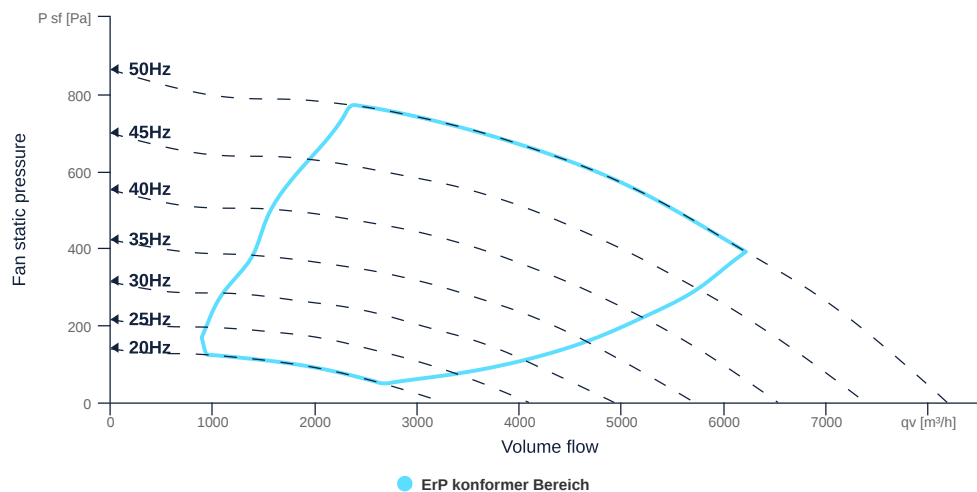
157200

- Centrifugal fan with backward curved impeller
- Variable discharge direction right / left / linear
- Double wall housing made of galvanized steel sheet, insulated
- Efficient IE3 motor, frequency controllable
- Motor protection via frequency converter or motor protection switch
- With bottom tray



FAN CURVES

Name	Value	Unit
Volume flow	0	m³/h
Pressure	0	Pa



to the product detail page

MPC 500 D4 40

157200

ruck

GENERAL DATA

Name	Value	Unit	Formula symbol
Labeling	CE, UKCA		
Duct size	-		WxHduct
Pipe connection size (DN)	DN500		DN
Rated voltage (entire device)	400	V	U _{rated}
Phases (entire device)	3~		phase
Electrical protection (entire device)	6 A		fuse
Housing material	Galvanized steel		mat _{casing}
Impeller material	Coated steel		mat _{impeller}
Weight	76	kg	m
Nominal air flow rate, nominal point m ³ /h	4615.2	m ³ /h	q _{v,nom}
Nominal external pressure, static	612.2	Pa	p _{s,nom}
Fan type	Radial		Fan _{type}
Category / Installation situation	A		cat

ERP DATA (LOT 6)

Name	Value	Unit	Formula symbol
Nominal air flow rate, nominal point m ³ /s	1.28	m ³ /s	q _{v,nom}
Actual electrical input power, nominal point	1.46	kW	P _{e,nom}
Face velocity, nominal point	2.2	m/s	v _{nom}
Nominal external pressure, static	612.2	Pa	p _{s,nom}
supply air fan static efficiency, nominal point	59.2	%	η _{es,SUP}
Highest external air leakage rate	0.01	%	
Enclosure sound level, nominal point	70	dba	L _{WA2}
Rating	Product is compliant 2018		

MAXIMAL DATA

Name	Value	Unit	Formula symbol
Max. power consumption (device)	1521	W	P _{ed, max}
Max. operating current (device)	3	A	I _{ed, max}
Max. speed	1485	1/min	n _{max}
Max. stat. efficiency	51	%	η _{es}
Max. fan efficiency	51.9	%	η _e
Max. flowrate	8180	m ³ /h	q _{w, max}
Max. stat pressure	860	Pa	p _{sf, max}
Max. medium temperature	60	°C	T _{m, max}
Max. environment temperature	60	°C	T _{amb, max}
Min. environment temperature	-20	°C	T _{amb, min}



to the product detail page

MPC 500 D4 40

157200

ruck

MOTOR DATA

Name	Value		Unit	Formula symbol
	50 Hz	60 Hz		
Rated frequency (device)		50		f
Motor type		AC 3~		phase
Control type		frequency-controlled		ctrltype
Installation type		IRM (In)		install
Rotation direction		right		rotation
Isolation class		ISO F		ISOclass
Protection class		IP55		IPmotor
Is pole-changeable		No		polexch
Type of power supply		AC 3~		pwr ^{sup} motor
Number of poles (1)		4.000000		num poles _{w1}
Connection	Δ	Δ		wiring _{w1}
Connection (wiring 2)	Y	Y		wiring _{w2}
Rated voltage	230	265	V	U _{rated, f1}
Rated voltage (wiring 2)	400	460	V	U _{rated, f2}
Rated current	4.4	3.8	A	I _{rated, f1}
Rated current (wiring 2)	2.53	2.2	A	I _{rated, f2}
Shaft power	1100	1100	W	P _{out, f1}
Shaft power (wiring 2)	1100	1100	W	P _{out, f2}
Speed	1445	1750	1/min	n _{f1}
Speed (wiring 2)	1445	1750	1/min	n _{f2}
Efficiency	84.1	86.5	%	η _{m, f1}
Efficiency (wiring 2)	84.1	86.5	%	η _{m, f2}
Efficiency class	IE3	IE3		IE _{motor}
Min. temperature	-20	-20	°C	T _{motor, min}
Cos Phi	0.780000	0.770000		cos φ
UL-Certification motor		None		ULcert



to the product detail page