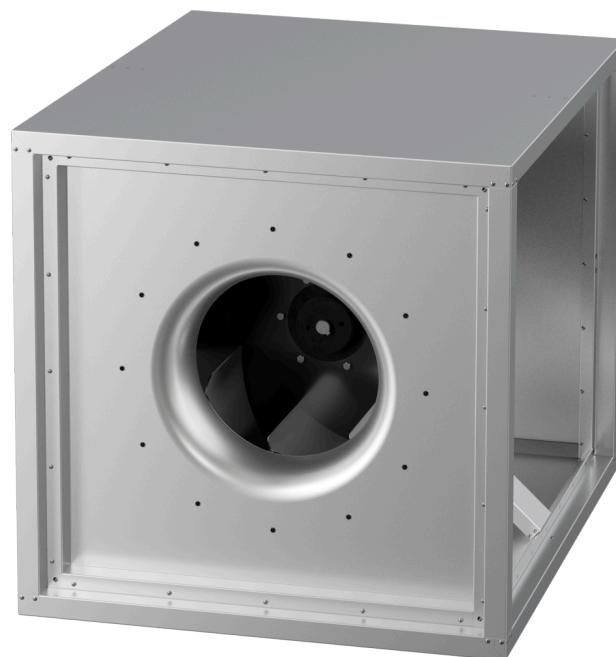


MPC 560 D4 40

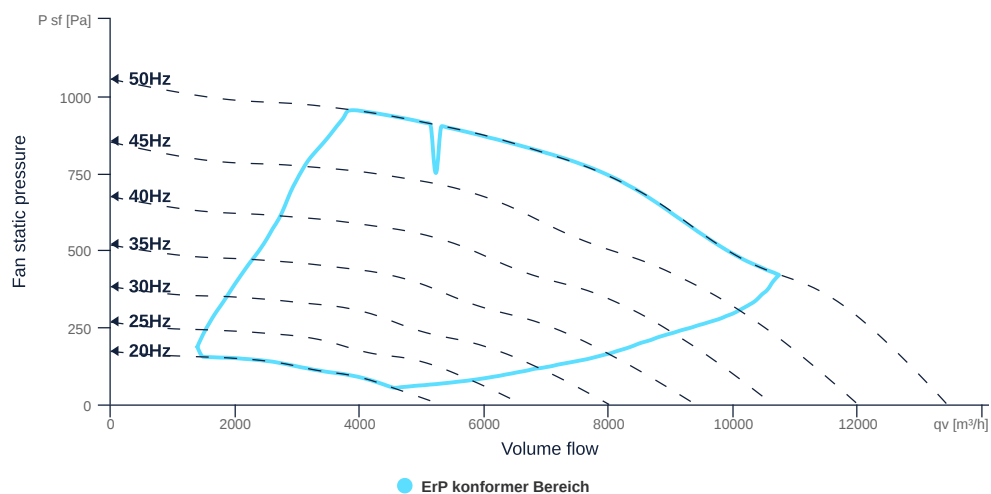
157203

- Centrifugal fan with backward curved impeller
- Variable discharge direction right / left / linear
- Double wall housing made of galvanized steel sheet, insulated
- Efficient IE3 motor, frequency controllable
- Motor protection via frequency converter or motor protection switch
- With bottom tray



FAN CURVES

Name	Value	Unit
Volume flow	0	m³/h
Pressure	0	Pa



to the product detail page

MPC 560 D4 40

157203

ruck

GENERAL DATA

Name	Value	Unit	Formula symbol
Labeling	CE, UKCA		
Duct size	-		WxHduct
Pipe connection size (DN)	DN630		DN
Rated voltage (entire device)	400	V	U _{rated}
Phases (entire device)	3~		phase
Electrical protection (entire device)	6 A		fuse
Housing material	Galvanized steel		matcasing
Impeller material	Coated steel		matimpeller
IP-protection class (entire device)	IPX4		IP _{compl}
IP-Protection class (terminal box)	IP55		IP _{ebox}
Weight	134	kg	m
Nominal air flow rate, nominal point m ³ /h	8038.8	m ³ /h	q _{v,nom}
Nominal external pressure, static	735.7	Pa	p _{s,nom}
Fan type	Radial		Fan _{type}
Category / Installation situation	A		cat

ERP DATA (LOT 6)

Name	Value	Unit	Formula symbol
Nominal air flow rate, nominal point m ³ /s	2.23	m ³ /s	q _{v,nom}
Actual electrical input power, nominal point	2.69	kW	P _{e,nom}
Face velocity, nominal point	3.7	m/s	v _{nom}
Nominal external pressure, static	735.7	Pa	p _{s,nom}
supply air fan static efficiency, nominal point	63.4	%	η _{es,SUP}
Enclosure sound level, nominal point	74	dba	L _{WA2}
Rating	Product is compliant 2018		



to the product detail page

MPC 560 D4 40

157203

ruck

MAXIMAL DATA

Name	Value	Unit	Formula symbol
Max. power consumption (device)	2688	W	$P_{ed, max}$
Max. operating current (device)	5.04	A	$I_{ed, max}$
Max. speed	1470	1/min	n_{max}
Max. stat. efficiency	57.5	%	η_{es}
Max. fan efficiency	58.1	%	η_e
Max. flowrate	13410	m ³ /h	Q_v, max
Max. stat pressure	1050	Pa	$p_{sf, max}$
Max. medium temperature	60	°C	T_m, max
Max. environment temperature	60	°C	$T_{amb, max}$
Min. environment temperature	-20	°C	$T_{amb, min}$



to the product detail page

MOTOR DATA

Name	Value		Unit	Formula symbol
	50 Hz	60 Hz		
Rated frequency (device)		50		f
Motor type		AC 3~		phase
Control type		frequency-controlled		ctrltype
Installation type		IRM (In)		install
Rotation direction		right		rotation
Isolation class		ISO F		ISOclass
Protection class		IP55		IPmotor
Is pole-changeable		No		polexch
Type of power supply		AC 3~		pwrsupmotor
Number of poles (1)		4.000000		num poles _{w1}
Connection		Δ		wiring _{w1}
Connection (wiring 2)		Y		wiring _{w2}
Rated voltage	230		V	U _{rated, f1}
Rated voltage (wiring 2)	400		V	U _{rated, f2}
Rated current	8.3		A	I _{rated, f1}
Rated current (wiring 2)	4.8		A	I _{rated, f2}
Shaft power	2200		W	P _{out, f1}
Shaft power (wiring 2)	2200		W	P _{out, f2}
Speed	1447		1/min	n _{f1}
Speed (wiring 2)	1447		1/min	n _{f2}
Efficiency	86.7		%	η _{m, f1}
Efficiency (wiring 2)	86.7		%	η _{m, f2}
Efficiency class	IE3			IE _{motor}
Min. temperature	-30		°C	T _{motor, min}
Cos Phi	0.790000	0.000000		cos φ
UL-Certification motor		None		ULcert



to the product detail page