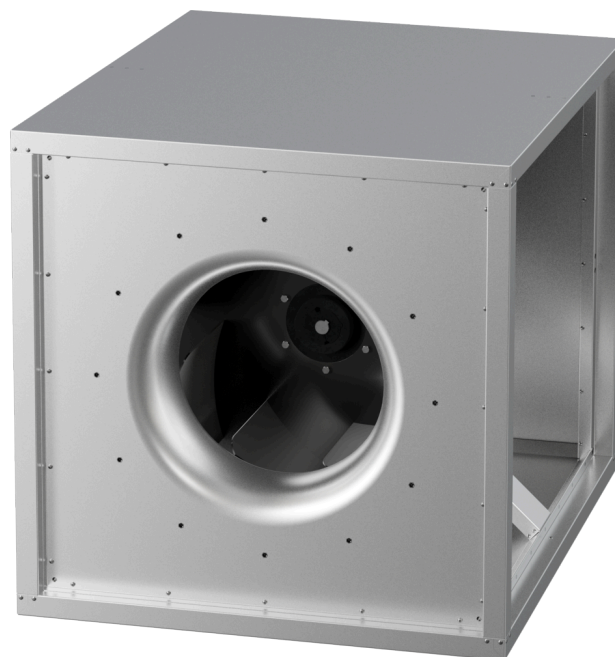


MPC 630 D4 40

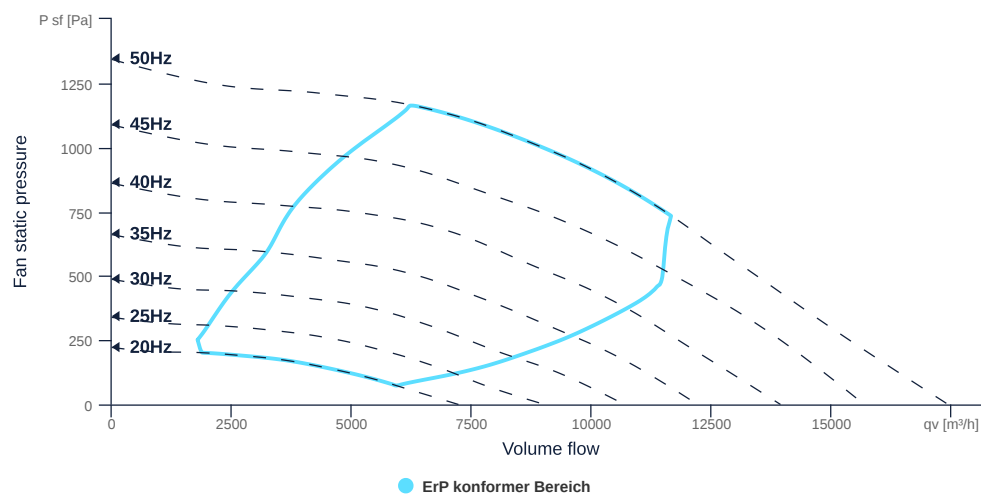
157204

- Centrifugal fan with backward curved impeller
- Variable discharge direction right / left / linear
- Double wall housing made of galvanized steel sheet, insulated
- Efficient IE3 motor, frequency controllable
- Motor protection via frequency converter or motor protection switch
- With bottom tray



FAN CURVES

Name	Value	Unit
Volume flow	0	m³/h
Pressure	0	Pa



to the product detail page

MPC 630 D4 40

157204

ruck

GENERAL DATA

Name	Value	Unit	Formula symbol
Labeling	CE, UKCA		
Duct size	-		WxHduct
Pipe connection size (DN)	DN630		DN
Rated voltage (entire device)	400	V	U _{rated}
Phases (entire device)	3~		phase
Electrical protection (entire device)	10 A		fuse
Housing material	Galvanized steel		matcasing
Impeller material	Coated steel		matimpeller
IP-protection class (entire device)	IPX4		IP _{compl}
IP-Protection class (terminal box)	IP55		IP _{ebox}
Weight	144	kg	m
Nominal air flow rate, nominal point m ³ /h	9421.2	m ³ /h	q _{v,nom}
Nominal external pressure, static	839.5	Pa	p _{s,nom}
Fan type	Radial		Fan _{type}
Category / Installation situation	A		cat

ERP DATA (LOT 6)

Name	Value	Unit	Formula symbol
Nominal air flow rate, nominal point m ³ /s	2.62	m ³ /s	q _{v,nom}
Actual electrical input power, nominal point	3.88	kW	P _{e,nom}
Face velocity, nominal point	4.4	m/s	v _{nom}
Nominal external pressure, static	839.5	Pa	p _{s,nom}
supply air fan static efficiency, nominal point	66.7	%	η _{es,SUP}
Highest external air leakage rate	0.01	%	
Enclosure sound level, nominal point	86	dba	L _{WA2}
Rating	Product is compliant 2018		



to the product detail page

MPC 630 D4 40

157204

ruck

MAXIMAL DATA

Name	Value	Unit	Formula symbol
Max. power consumption (device)	4520	W	$P_{ed, max}$
Max. operating current (device)	9	A	$I_{ed, max}$
Max. speed	1490	1/min	n_{max}
Max. stat. efficiency	54,6	%	η_{es}
Max. fan efficiency	55,2	%	η_e
Max. flowrate	17410	m ³ /h	Q_v, max
Max. stat pressure	1340	Pa	$p_{sf, max}$
Max. medium temperature	60	°C	T_m, max
Max. environment temperature	60	°C	$T_{amb, max}$
Min. environment temperature	-20	°C	$T_{amb, min}$



[to the product detail page](#)

MPC 630 D4 40

157204

ruck

MOTOR DATA

Name	Value		Unit	Formula symbol
	50 Hz	60 Hz		
Rated frequency (device)		50		f
Motor type		AC 3~		phase
Control type		frequency-controlled		ctrltype
Installation type		IRM (In)		install
Rotation direction		right		rotation
Isolation class		ISO F		ISOclass
Is pole-changeable		No		polexch
Type of power supply		AC 3~		pwrsupmotor
Number of poles (1)		4.000000		num polesw1
Connection	Δ	Y		wiringw1
Connection (wiring 2)	Y			wiringw2
Rated voltage	230	460	V	Urated, f1
Rated voltage (wiring 2)	400		V	Urated, f2
Rated current	14.3	7.28	A	Irated, f1
Rated current (wiring 2)	8.2		A	Irated, f2
Shaft power	4000	4000	W	Pout, f1
Shaft power (wiring 2)	4000		W	Pout, f2
Speed	1450	1755	1/min	n1
Speed (wiring 2)	1450		1/min	n2
Starting current	100	58.2	A	Istart, f1
Starting current (wiring 2)	57.4		A	Istart, f2
Efficiency	89.1	89.5	%	η m, f1
Efficiency (wiring 2)	89.1		%	η m, f2
Efficiency class	IE3	IE3		IEmotor
Min. temperature	-20	-20	°C	Tmotor, min
Cos Phi	0.790000	0.770000		cos φ
UL-Certification motor		UL recognized		ULcert



to the product detail page