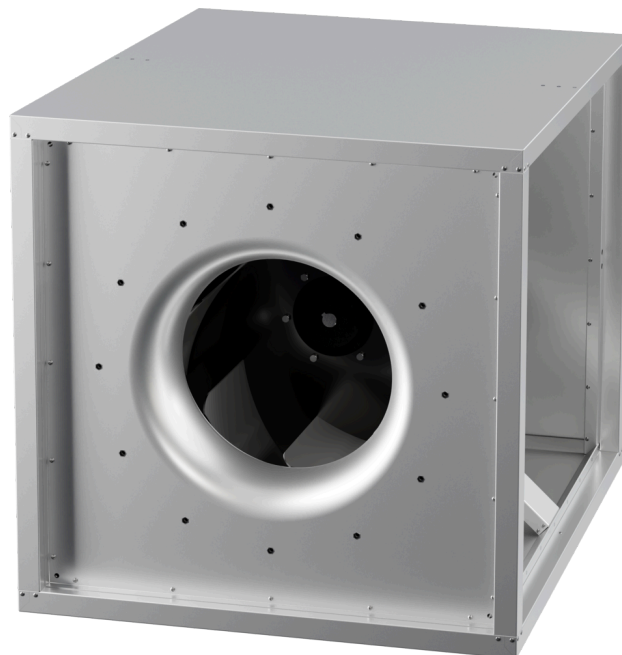


MPC 630 D6 40

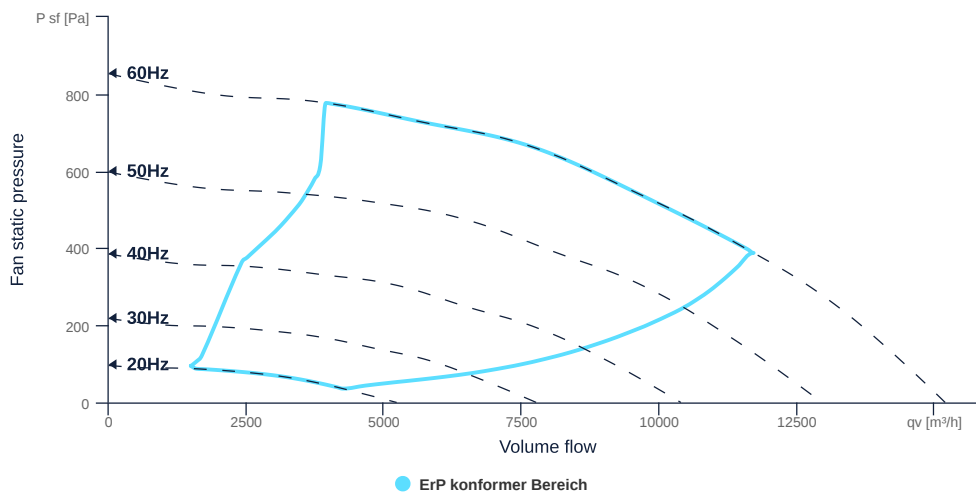
164818

- Centrifugal fan with backward curved impeller
- Variable discharge direction right / left / linear
- Double wall housing made of galvanized steel sheet, insulated
- Efficient IE3 motor, frequency controllable
- Motor protection via frequency converter or motor protection switch
- With bottom tray



FAN CURVES

Name	Value	Unit
Volume flow	0	m³/h
Pressure	0	Pa



to the product detail page

MPC 630 D6 40

164818

ruck

GENERAL DATA

Name	Value	Unit	Formula symbol
Labeling	CE, UKCA		
Duct size	-		WxHduct
Pipe connection size (DN)	DN630		DN
Rated voltage (entire device)	400	V	U _{rated}
Phases (entire device)	3~		phase
Electrical protection (entire device)	6 A		fuse
Housing material	Galvanized steel		matcasing
Impeller material	Coated steel		matimpeller
Weight	131	kg	m
Nominal air flow rate, nominal point m ³ /h	11710.8	m ³ /h	q _{v,nom}
Nominal external pressure, static	388	Pa	p _{s,nom}
Fan type	Radial		Fan _{type}
Category / Installation situation	A		cat

ERP DATA (LOT 6)

Name	Value	Unit	Formula symbol
Nominal air flow rate, nominal point m ³ /s	3.25	m ³ /s	q _{v,nom}
Actual electrical input power, nominal point	2.63	kW	P _{e,nom}
Face velocity, nominal point	5.45	m/s	v _{nom}
Nominal external pressure, static	388	Pa	p _{s,nom}
static efficiency of the extract fan, nominal point	48	%	η _{es,EHA}
Highest external air leakage rate	0.12	%	
Enclosure sound level, nominal point	72.6	dba	LWA2
Rating	Product is compliant 2018		

MAXIMAL DATA

Name	Value	Unit	Formula symbol
Max. power consumption (device)	2547	W	P _{ed, max}
Max. operating current (device)	5.2	A	I _{ed, max}
Max. speed	1190	1/min	n _{max}
Max. stat. efficiency	55.6	%	η _{es}
Max. fan efficiency	56.3	%	η _e
Max. flowrate	15190	m ³ /h	q _{v, max}
Max. stat pressure	850	Pa	p _{sf, max}
Max. medium temperature	60	°C	T _{m, max}
Max. environment temperature	60	°C	T _{amb, max}
Min. environment temperature	-20	°C	T _{amb, min}



to the product detail page

MPC 630 D6 40

164818

ruck

MOTOR DATA

Name	Value		Unit	Formula symbol
	50 Hz	60 Hz		
Rated frequency (device)		50		f
Motor type		AC 3~		phase
Control type		frequency-controlled		ctrltype
Installation type		IRM (In)		install
Rotation direction		right		rotation
Isolation class		ISO F		ISOclass
Protection class		IP55		IPmotor
Is pole-changeable		No		polexch
Type of power supply		AC 3~		pwrsupmotor
Number of poles (1)		6.000000		num polesw1
Connection	Δ	Y		wiringw1
Connection (wiring 2)	Y			wiringw2
Rated voltage	230	460	V	U _{rated, f1}
Rated voltage (wiring 2)	400		V	U _{rated, f2}
Rated current	9.2	4.64	A	I _{rated, f1}
Rated current (wiring 2)	5.29		A	I _{rated, f2}
Shaft power	2200	2200	W	P _{out, f1}
Shaft power (wiring 2)	2200		W	P _{out, f2}
Speed	960	1165	1/min	n _{f1}
Speed (wiring 2)	960		1/min	n _{f2}
Starting current	59.8	35.3	A	I _{start, f1}
Starting current (wiring 2)	34.4		A	I _{start, f2}
Efficiency	84.5	87.5	%	η _{m, f1}
Efficiency (wiring 2)	84.5		%	η _{m, f2}
Efficiency class	IE3	IE3		IE _{motor}
Min. temperature	-20	-20	°C	T _{motor, min}
Cos Phi	0.710000	0.680000		cos φ
UL-Certification motor		UL recognized		ULcert



to the product detail page