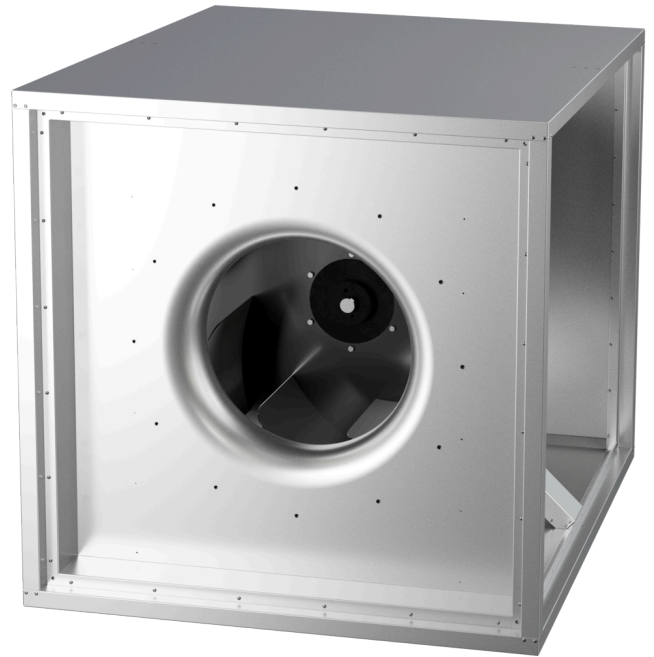


MPC 710 D6 40

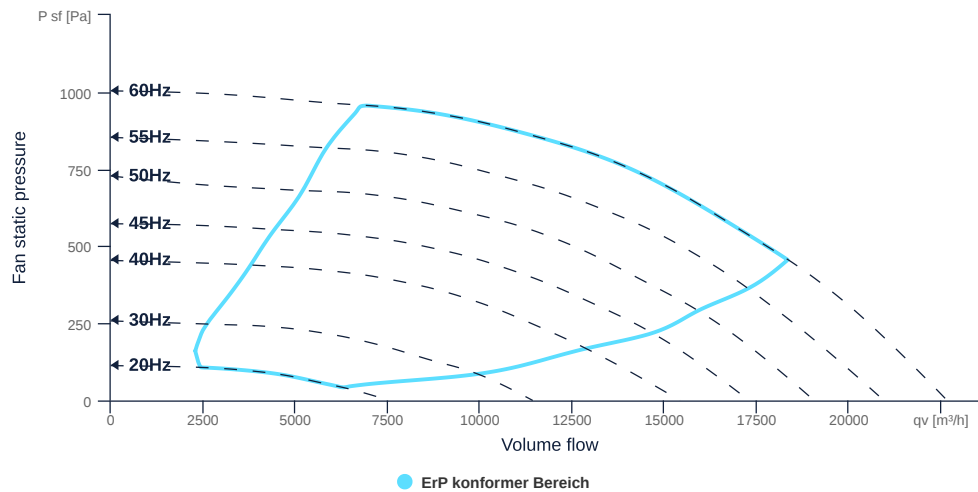
150953

- Centrifugal fan with backward curved impeller
- Variable discharge direction right / left / linear
- Double wall housing made of galvanized steel sheet, insulated
- Efficient IE3 motor, frequency controllable
- Motor protection via frequency converter or motor protection switch
- With bottom tray



FAN CURVES

Name	Value	Unit
Volume flow	0	m³/h
Pressure	0	Pa



to the product detail page

MPC 710 D6 40

150953

ruck

GENERAL DATA

Name	Value	Unit	Formula symbol
Labeling	CE, UKCA		
Duct size	-		WxHduct
Pipe connection size (DN)	DN710		DN
Rated voltage (entire device)	400	V	Urated
Phases (entire device)	3~		phase
Electrical protection (entire device)	10 A		fuse
Housing material	Galvanized steel		matcasing
Impeller material	Steel		matimpeller
Weight	224	kg	m
Nominal air flow rate, nominal point m³/h	12373.2	m³/h	qVnom
Nominal external pressure, static	528.5	Pa	ps, nom
Fan type	Radial		Fan type
Category / Installation situation	A		cat

ERP DATA (LOT 6)

Name	Value	Unit	Formula symbol
Nominal air flow rate, nominal point m³/s	3.44	m³/s	qV, nom
Actual electrical input power, nominal point	2.84	kW	Pe, nom
Face velocity, nominal point	7.9	m/s	Vnom
Nominal external pressure, static	528.5	Pa	ps, nom
supply air fan static efficiency, nominal point	65.7	%	ηes, SUP
Highest external air leakage rate	0.01	%	
Enclosure sound level, nominal point	79	dba	LWA2
Rating	Product is compliant 2018		

MAXIMAL DATA

Name	Value	Unit	Formula symbol
Max. power consumption (device)	2838	W	Ped, max
Max. operating current (device)	7	A	Ied, max
Max. speed	990	1/min	nmax
Max. stat. efficiency	61.8	%	ηes
Max. fan efficiency	66	%	ηe
Max. flowrate	19555	m³/h	qV, max
Max. stat pressure	720	Pa	psf, max
Max. medium temperature	60	°C	Tm, max
Max. environment temperature	60	°C	Tamb, max
Min. environment temperature	-20	°C	Tamb, min



to the product detail page

MPC 710 D6 40

150953

ruck

MOTOR DATA

Name	Value		Unit	Formula symbol
	50 Hz	60 Hz		
Rated frequency (device)		50		f
Motor type		AC 3~		phase
Control type		frequency-controlled		ctrltype
Installation type		IRM (In)		install
Rotation direction		right		rotation
Isolation class		ISO F		ISOclass
Is pole-changeable		No		polexch
Type of power supply		AC 3~		pwrsupmotor
Number of poles (1)		6.000000		num polesw1
Connection	Δ	Δ		wiringw1
Connection (wiring 2)	Y			wiringw2
Rated voltage	400	460	V	U _{rated, f1}
Rated voltage (wiring 2)	690		V	U _{rated, f2}
Rated current	8.99	7.9	A	I _{rated, f1}
Rated current (wiring 2)	5.21		A	I _{rated, f2}
Shaft power	4000	4000	W	P _{out, f1}
Shaft power (wiring 2)	4000		W	P _{out, f2}
Speed	960	1165	1/min	n _{f1}
Speed (wiring 2)	960		1/min	n _{f2}
Starting current	58.4	52.1	A	I _{start, f1}
Starting current (wiring 2)	33.9		A	I _{start, f2}
Efficiency	86.8	89.5	%	$\eta_m, f1$
Efficiency (wiring 2)	86.8		%	$\eta_m, f2$
Efficiency class	IE3	IE3		IE _{motor}
Min. temperature	-20	-20	°C	T _{motor, min}
Cos Phi	0.740000	0.710000		cos φ
UL-Certification motor		UL recognized		ULcert



to the product detail page