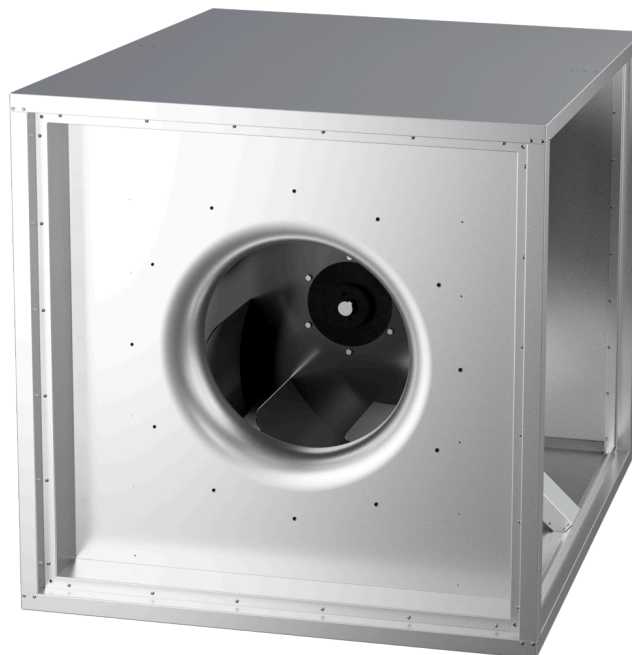


# MPC 800 D6 40

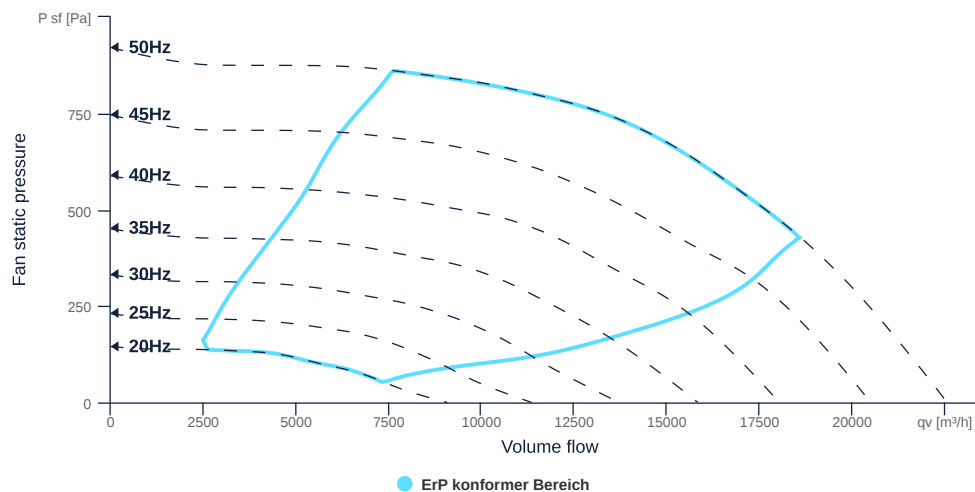
150961

- Centrifugal fan with backward curved impeller
- Variable discharge direction right / left / linear
- Double wall housing made of galvanized steel sheet, insulated
- Efficient IE3 motor, frequency controllable
- Motor protection via frequency converter or motor protection switch
- With bottom tray



## FAN CURVES

Name	Value	Unit
Volume flow	0	m³/h
Pressure	0	Pa



to the product detail page

# MPC 800 D6 40

150961

**ruck**

## GENERAL DATA

Name	Value	Unit	Formula symbol
Labeling	CE, UKCA		
Duct size	-		WxHduct
Pipe connection size (DN)	DN710		DN
Rated voltage (entire device)	400	V	U <sub>rated</sub>
Phases (entire device)	3~		phase
Electrical protection (entire device)	10 A		fuse
Housing material	Galvanized steel		mat <sub>casing</sub>
Impeller material	Coated steel		mat <sub>impeller</sub>
Weight	248	kg	m
Nominal air flow rate, nominal point m <sup>3</sup> /h	13543.2	m <sup>3</sup> /h	q <sub>v,nom</sub>
Nominal external pressure, static	733.1	Pa	p <sub>s,nom</sub>
Fan type	Radial		Fan <sub>type</sub>
Category / Installation situation	A		cat

## ERP DATA (LOT 6)

Name	Value	Unit	Formula symbol
Nominal air flow rate, nominal point m <sup>3</sup> /s	3.76	m <sup>3</sup> /s	q <sub>v,nom</sub>
Actual electrical input power, nominal point	4.5	kW	P <sub>e,nom</sub>
Face velocity, nominal point	3.3	m/s	v <sub>nom</sub>
Nominal external pressure, static	733.1	Pa	p <sub>s,nom</sub>
supply air fan static efficiency, nominal point	61.3	%	η <sub>es,SUP</sub>
Highest external air leakage rate	0.01	%	
Enclosure sound level, nominal point	74	dba	LWA2
Rating	Product is compliant 2018		

## MAXIMAL DATA

Name	Value	Unit	Formula symbol
Max. power consumption (device)	4600	W	P <sub>ed, max</sub>
Max. operating current (device)	9.7	A	I <sub>ed, max</sub>
Max. speed	990	1/min	n <sub>max</sub>
Max. stat. efficiency	59.3	%	η <sub>es</sub>
Max. fan efficiency	59.8	%	η <sub>e</sub>
Max. flowrate	22560	m <sup>3</sup> /h	q <sub>v, max</sub>
Max. stat pressure	920	Pa	p <sub>sf, max</sub>
Max. medium temperature	60	°C	T <sub>m, max</sub>
Max. environment temperature	60	°C	T <sub>amb, max</sub>
Min. environment temperature	-20	°C	T <sub>amb, min</sub>



to the product detail page

# MPC 800 D6 40

150961

**ruck**

## MOTOR DATA

Name	Value		Unit	Formula symbol
	50 Hz	60 Hz		
Rated frequency (device)		50		f
Motor type		AC 3~		phase
Control type		frequency-controlled		ctrltype
Installation type		IRM (In)		install
Rotation direction		right		rotation
Isolation class		ISO F		ISOclass
Is pole-changeable		No		polexch
Type of power supply		AC 3~		pwrsupmotor
Number of poles (1)		6.000000		num polesw1
Connection	Δ	Δ		wiringw1
Connection (wiring 2)	Y			wiringw2
Rated voltage	400	460	V	Urated, f1
Rated voltage (wiring 2)	690		V	Urated, f2
Rated current	8.99	7.9	A	Irated, f1
Rated current (wiring 2)	5.21		A	Irated, f2
Shaft power	4000	4000	W	Pout, f1
Shaft power (wiring 2)	4000		W	Pout, f2
Speed	960	1165	1/min	n1
Speed (wiring 2)	960		1/min	n2
Starting current	58.4	52.1	A	Istart, f1
Starting current (wiring 2)	33.9		A	Istart, f2
Efficiency	86.8	89.5	%	ηm, f1
Efficiency (wiring 2)	86.8		%	ηm, f2
Efficiency class	IE3	IE3		IEmotor
Min. temperature	-20	-20	°C	Tmotor, min
Cos Phi	0.740000	0.710000		cos φ
UL-Certification motor		UL recognized		ULcert



to the product detail page