

QB



CE UK
CA

 aerauliqa®

Read this manual carefully before using the product and keep it in a safe place for reference.

This product was constructed up to standard and in compliance with regulations relating to electrical equipment and must be installed by technically qualified personnel.

The manufacturer assumes no responsibility for damage to persons or property resulting from failure to observe the regulations contained in this booklet.

PRECAUTIONS FOR INSTALLATION, USE AND MAINTENANCE

- The device should not be used for applications other than those specified in this manual.
- After removing the product from its packaging, verify its condition. In case of doubt, contact a qualified technician. Do not leave packaging within the reach of small children or people with disabilities.
- Do not touch the appliance with wet or damp hands/feet.
- This appliance can be used by children aged from 8 years and above and persons with reduced physical, sensory or mental capabilities or lack of experience and knowledge if they have been given supervision or instruction concerning use of the appliance in a safe way and understand the hazards involved. Children shall not play with the appliance. Cleaning and user maintenance shall not be made by children without supervision.
- Do not use the product in the presence of flammable vapours, such as alcohol, insecticides, gasoline, etc.
- If any abnormalities in operation are detected, disconnect the device from the mains supply and contact a qualified technician immediately. Use original spare parts only for repairs.
- The electrical system to which the device is connected must comply with regulations.
- Before connecting the product to the power supply or the power outlet, ensure that:
 - the data plate (voltage and frequency) correspond to those of the electrical mains
 - the electrical power supply/socket is adequate for maximum device power. If not, contact a qualified technician.
- The device should not be used as an activator for water heaters, stoves, etc., nor should it discharge into hot air/fume vent ducts deriving from any type of combustion unit. It must expel air outside via its own special duct.
- Operating temperature: 0°C up to +50°C.
- The device is designed to extract clean air only, i.e. without grease, soot, chemical or corrosive agents, or flammable or explosive mixtures.
- Do not leave the device exposed to atmospheric agents (rain, sun, snow, etc.).
- Do not immerse the device or its parts in water or other liquids.
- Turn off the main switch whenever a malfunction is detected or when cleaning.
- For installation an omnipolar switch should be incorporated in the fixed wiring, in accordance with the wiring regulations, to provide a full disconnection under overvoltage category III conditions (contact opening distance equal to or greater than 3mm).
- If the supply cord is damaged, it must be replaced by the manufacturer, its service agent or similarly qualified persons in order to avoid a hazard.
- Do not obstruct the fan or exhaust grille to ensure optimum air passage.
- Ensure adequate air return into the room in compliance with existing regulations in order to ensure proper device operation.
- If the environment in which the product is installed also houses a fuel-operating device (water heater, methane stove etc., that is not a “sealed chamber” type), it

is essential to ensure adequate air intake, to ensure good combustion and proper equipment operation.

- Install the product so that the impeller is not accessible from the air outlet side as verified by contact with the Test Finger (test probe “B” of the norm EN61032) in compliance with the current safety regulations.

INTRODUCTION

QB is an axial fan designed to ensure air extraction in small rooms such as bathrooms e toilets. Suitable for air discharge directly to the outside or in the presence of short linear duct (less than 1.5m). Wall or ceiling installation.

TECHNICAL SPECIFICATIONS

- High efficiency aerodynamic fan with “winglet” blades to optimise quietness and efficiency.
- Single phase induction motor with integral thermal protection.
- The fan is double insulated: no earth connection is required.
- Power supply 220V to 240V~ 50/60Hz.
- IPX4 wall installation / IPX2 ceiling installation.

VERSIONS

STANDARD

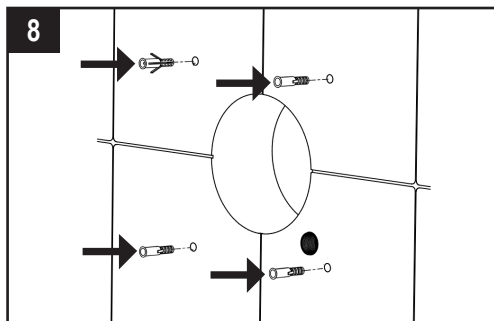
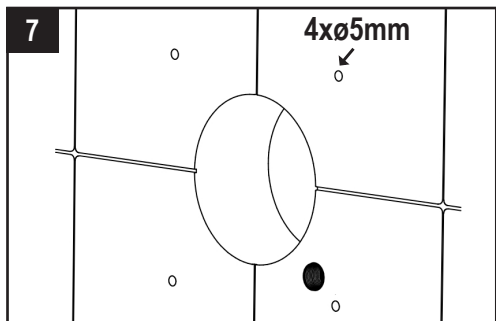
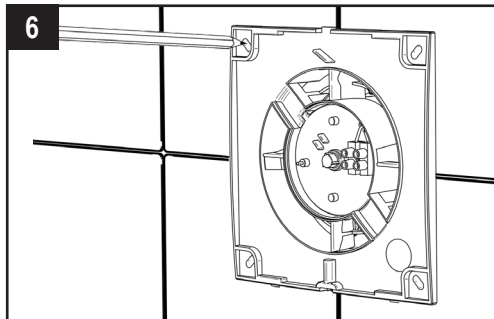
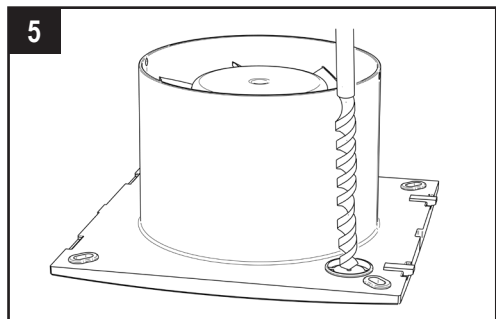
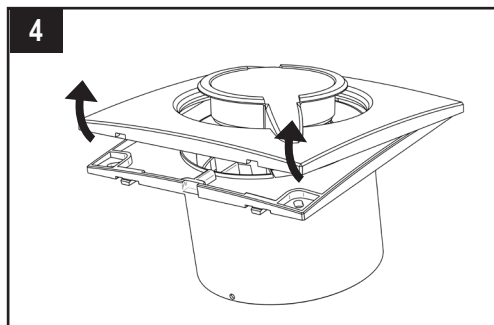
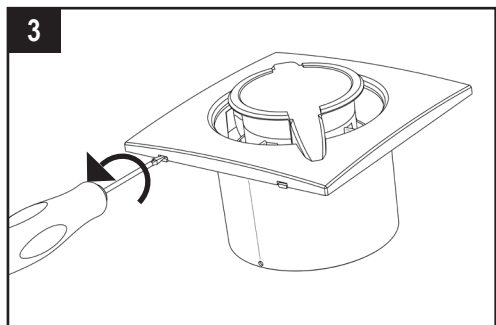
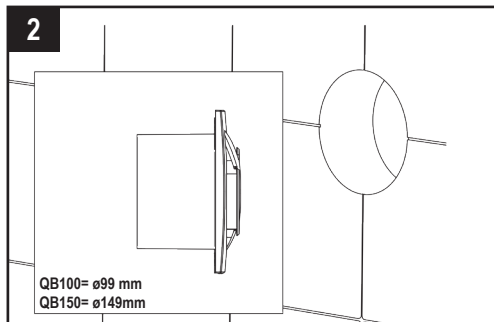
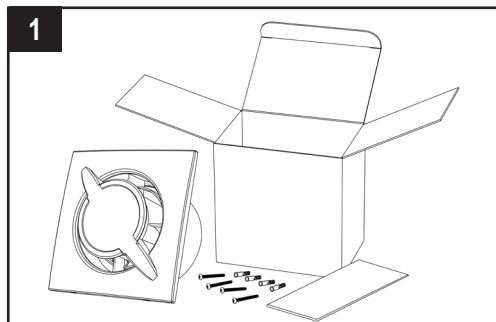
The fan is operated using a separate ON/OFF switch or via a light switch (fig. 10A).

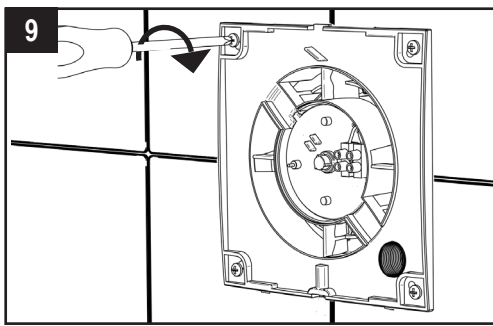
WITH TIMER (over-run)

The fan is provided with a timer circuit which is adjustable from aprox. 1 minute to 25 minutes via trimmer (fig. 11B).

Operation: connected according to the diagram in fig. 11A, after the light is switched on, the fan activates with a delay of max 1.5 seconds. After the light is switched off, the fan continues to function for a pre-set period of time.

**MONTAGGIO E COLLEGAMENTI ELETTRICI - MOUNTING AND ELECTRICAL WIRING -
MONTAGE ET BRANCHEMENTS ELECTRIQUES MONTAJE Y CONEXIONES ELECTRICAS -
MONTAGE UND ELEKTRISCHE ANSCHLÜßE - МОНТАЖ И ПРОКЛАДКА ЭЛЕКТРИЧЕСКИХ
ПРОВОДОВ**

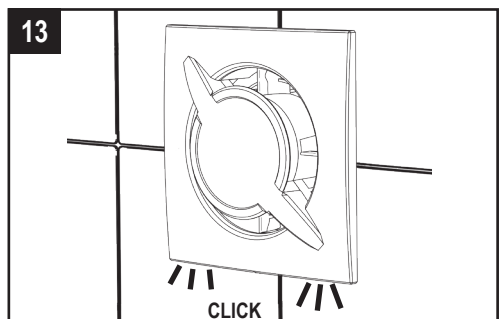
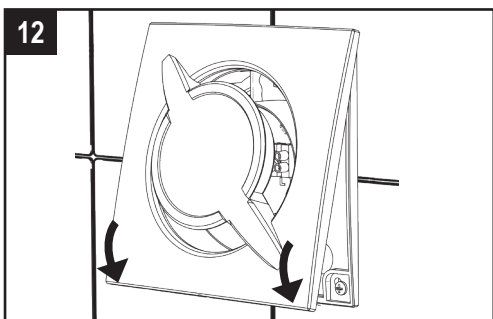
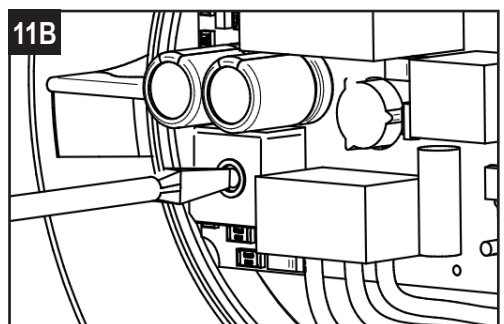
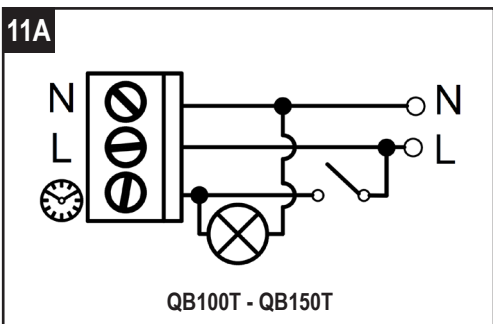
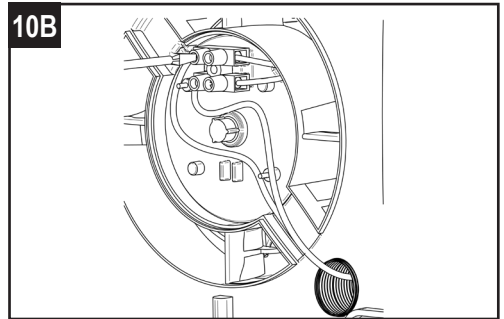
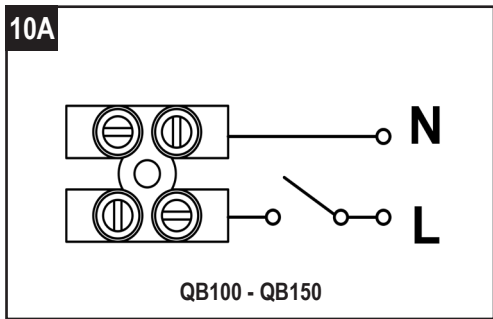




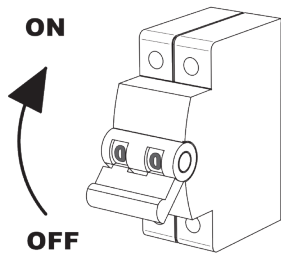
CAVO SOTTOTRACCIA
 RECESSED CABLE ENTRY
 CÂBLE SOUS GAIN
 CABLE DE TUBERÍAS
 UNTERPUTZ-KABEL
 СКРЫТЫЙ ПОДВОД КАБЕЛЯ

H03VV-F ; H05VV-F

BASE $\begin{cases} 2 \times 0,5 \div 1,5 \text{mm}^2 \\ 3 \times 0,5 \div 1,5 \text{mm}^2 \end{cases}$
 T $\begin{cases} 3 \times 0,5 \div 1,5 \text{mm}^2 \\ 4 \times 0,5 \div 1 \text{mm}^2 \end{cases}$

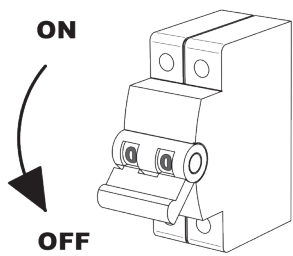


14

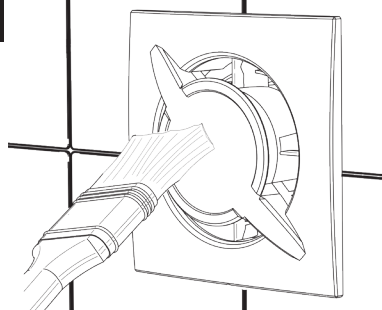


**MANUTENZIONE / PULIZIA - MAINTENANCE / CLEANING - MAINTENANCE / NETTOYAGE
MANTENIMIENTO / LIMPIEZA - WARTUNG / REINIGUNG - УХОД / ЧИСТКА**

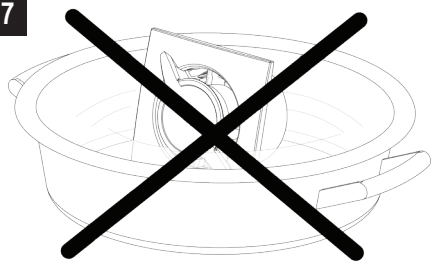
15



16



17



SMALTIMENTO E RICICLAGGIO



Informativa sullo smaltimento delle unità a fine vita.

Questo prodotto è conforme alle Direttiva EU 2002/96/EC.

Il simbolo del cassonetto barrato riportato sull'apparecchiatura indica che il prodotto alla fine della propria vita utile deve essere raccolto separatamente dagli altri rifiuti. L'utente dovrà, pertanto, conferire l'apparecchiatura giunta a fine vita agli idonei centri di raccolta differenziata dei rifiuti elettronici ed elettrotecnici, oppure riconsegnarla al rivenditore al momento dell'acquisto di una nuova apparecchiatura di tipo equivalente.

L'adeguata raccolta differenziata per l'avvio successivo dell'apparecchiatura dimessa al riciclaggio, al trattamento e allo smaltimento ambientale compatibile contribuisce ad evitare possibili effetti negativi sull'ambiente e sulla salute e favorisce il riciclo dei materiali di cui è composta l'apparecchiatura.

Lo smaltimento abusivo del prodotto da parte dell'utente può implicare sanzioni amministrative previste dalla normativa vigente.

DISPOSAL AND RECYCLING

Information on disposal of units at the end of life.

This product complies with EU Directive 2002/96/EC.

The symbol of the crossed-out dustbin indicates that this product must be collected separately from other waste at the end of its life. The user must, therefore, dispose of the product in question at suitable electronic and electro-technical waste disposal collection centres, or else send the product back to the retailer when purchasing a new, equivalent type device.

Separate collection of decommissioned equipment for recycling, treatment and environmentally compatible disposal helps to prevent negative effects on the environment and on health and promotes the recycling of the materials that make up the equipment. Improper disposal of the product by the user may result in administrative sanctions as provided by law.

ELIMINATION ET RECYCLAGE DES DÉCHETS

Information sur l'élimination des appareils en fin de vie.

Ce produit est conforme aux Directives de l'Union Européenne 2002/96/EC.

Le symbole du conteneur barré présent sur l'appareil indique que le produit hors d'usage doit être éliminé séparément des autres déchets. L'utilisateur devra donc confier l'appareil hors d'usage à un centre de tri sélectif spécialisé pour les appareils électroniques et électrotechniques, ou bien le remettre au revendeur lors de l'achat d'un nouvel appareil du même type.

Un tri sélectif adéquat permet le recyclage, le traitement et l'élimination environnementale de l'appareil hors d'usage, ce qui contribue à éviter d'éventuels effets négatifs sur l'environnement et sur la santé et favorise le recyclage des matériaux dont est composé l'appareil.

L'élimination abusive du produit de la part de l'utilisateur peut impliquer des sanctions administratives prévues par la législation en vigueur.

ELIMINACIÓN Y RECICLAJE

Información acerca de la eliminación de las unidades al final de su vida útil.

Este producto cumple con la Directiva EU 2002/96/EC.

El símbolo del contenedor tachado que aparece sobre el aparato indica que el producto al final de su vida útil debe ser recogido por separado de los demás desechos. El usuario por tanto, una vez que el aparato ha llegado al final de su vida, deberá llevarlo a centro de recogida selectiva adecuados.

de desechos electrónicos y electrotécnicos, o bien entregarla a su distribuidor en el mismo momento que adquiere un nuevo aparato de características similares.

Una adecuada recogida selectiva de desechos para conducir al aparato no funcionante al reciclaje, al tratamiento y a una eliminación ambiental compatible contribuye a evitar posibles efectos negativos sobre el medio ambiente y la salud, y a favorecer el reciclaje de materiales de los que está compuesto el aparato.

La eliminación abusiva del producto por parte del usuario puede implicar sanciones administrativas previstas por la normativa vigente.

ENSTORGUNG UND RECYCLING

Aufklärung über die Entsorgung des Altgeräts.

Dieses Produkt stimmt mit der EU-Richtlinie 2002/96/EG.

Das Symbol mit der durchgestrichenen Mülltonne auf dem Gerät besagt, dass das Altgerät getrennt von anderem Müll entsorgt werden muss. Der Nutzer muss das Altgerät zu einem Entsorgungszentrum für Elektro- und Elektronikaltgeräte bringen oder es beim Händler beim Kauf eines entsprechenden Neugeräts zurückgeben.

Eine entsprechende Mülltrennung und eine anschließende Weiterleitung des Altgeräts an Recycling, Aufbereitung und umweltfreundliche Entsorgung trägt zur Vermeidung etwaiger negativer Auswirkungen auf Umwelt und Gesundheit bei und fördert das Recycling der Materialien, aus denen das Gerät gebaut ist.

Die unrechtmäßige Entsorgung durch den Nutzer kann im Rahmen der geltenden Gesetzesvorschriften rechtlich geahndet werden.

УТИЛИЗАЦИЯ И ПЕРЕРАБОТКА

Информация по утилизации установок в конце срока службы.

Данный продукт соответствует директиве ЕС 2002/96/ЕС.

Символ перечеркнутой мусорной корзины указывает, что данный продукт должен утилизироваться отдельно от других отходов в конце своей эксплуатации. Поэтому пользователь должен утилизировать изделие в любой электронном и электротехническом центре сбора отходов, или же отправить товар обратно продавцу при покупке нового эквивалентного типа устройства.

Раздельный сбор списанного оборудования для утилизации, переработке и экологически чистой утилизация поможет предотвратить негативные воздействия на окружающую среду и на здоровье и способствует переработке материалов, из которых состоит оборудование.

Ненадлежащая утилизация изделия пользователем может привести к административным санкциям, предусмотренным законом.

Direttiva ErP - Regolamenti 1253/2014 - 1254/2014
ErP Directive - Regulations 1253/2014 - 1254/2014
Directive Erp - Règlements 1253/2014 - 1254/2014
Directiva ErP - Reglamentos 1253/2014 - 1254/2014
ErP-Richtlinie, Verordnungen 1253/2014 - 1254/2014
Директива ErP - Регламенти 1253/2014 - 1254/2014

a)	Marchio Mark Marque Warenzeichen Marca Марка	-	AERAUliQA	
b)	Modello Model Modèle Modellkennung Modelo Модель	-	QB100 - QB100T	QB150 - QB150T
c)	Classe SEC SEC class classe de SEC SEV-Klasse classe CEE Удельный расход электроэнергии SEC (класс)	-	E	E
c1)	SEC climi caldi SEC warm climates SEC climat chaud SEV für warmen Klimatyp CEE clima cálido Удельный расход электроэнергии SEC-теплый период	kWh/m ² .a кВт/м ² .a	-2,5	-3,7
c2)	SEC climi temperati SEC average climates SEC climat moyen SEV für durchschnittlichen Klimatyp CEE clima templado Удельный расход электроэнергии SEC -переходный период	kWh/m ² .a кВт/м ² .a	-10,2	-11,4
c3)	SEC climi freddi SEC cold climates SEC climat froid SEV für kalten Klimatyp CEE clima frío Удельный расход электроэнергии SEC - холодный период	kWh/m ² .a кВт/м ² .a	-23,5	-24,7
	Etichetta energetica Energy label étiquette énergétique Energieverbrauchskennzeichnung Etiquetado energético Маркировка энергоэффективности	-	No Нет nėra	
d)	Tipologia unità Unit typology Typologie Typ Tipo Тип вентиляционной установки	-	Residenziale - unidirezionale Residential - unidirectional Résidentiel - simple flux Wohnraumlüftung - Ein-Richtung Бытовой - однонаправленный Gyvenamųjų patalpų - vienos krypties	
e)	Tipo azionamento Type of drive Type de motorisation Antrieb Tipo de accionamiento Тип вентилятора	-	azionamento a velocità singola single speed drive à une vitesse Einstufen-antrieb Однокоростной двигатель Viena greičio parinktis	
f)	Sistema di recupero calore Type of Heat Recovery System Type de système de récupération de chaleur Wärmerückgewinnungssystem Tipo de sistema de recuperación de calor Тип рекуператора	-	assente absent abwesend ausente Отсутствует nėra	
g)	Efficienza termica Thermal efficiency of heat recovery Rendement thermique Wärmerückgewinnung Eficiencia térmica Термоэффективность рекуператора	%	N/A -	

h)	Portata massima Maximum flow rate Débit maximal Höchster Luftvolumenstrom Caudal máximo Максимальный расход воздуха	m ³ /h м ³ /час	70	247
i)	Potenza elettrica alla portata massima Electric power input at maximum flow rate Puissance électrique absorbée au débit maximal elektrische Eingangsleistung bei höchstem Luftvolumenstrom Potencia eléctrica de entrada con el caudal máximo Потребляемая мощность, макс	W Вт	7,7	8,5
j)	Livello potenza sonora (L _{vA}) Sound power level (L _{vA}) Niveau de puissance acoustique (L _{vA}) Schalleistungspegel (L _{vA}) Nivel de potencia acústica (L _{vA}) Уровень звуковой мощности	dBА Дб	47	63
k)	Portata di riferimento Reference flow rate Débit de référence Bezugs-Luftvolumenstrom Caudal de referencia Номинальный расход	m ³ /h м ³ /час	70	247
l)	Differenza di pressione di riferimento Reference pressure difference Différence de pression de référence Bezugsdruckdifferenz Diferencia de presión de referencia Номинальное давление	Pa Па	10	10
m)	Potenza assorbita specifica (SPI) Specific power input (SPI) Puissance absorbée spécifique (SPI) Spezifische Eingangsleistung (SEL) Potencia de entrada específica Удельная потребляемая мощность (SPI)	W/m ³ /h Вт/м ³ /час	0,11	0,075
n1)	Fattore di controllo Control factor Facteur de régulation Steuerungsfaktor Factor del mando Фактор управления	-	1	1
n2)	Tipologia di controllo Control typology Typologie de régulation Steuerungstypologie Tipo de mando Тип управления	-	Controllo manuale (senza DCV) Manual control (no DCV) Régulation manuelle (pas de VM) Handsteuerung (keine Bedarfssteuerung) Mando manual (sin ventilación de la demanda) ручное управление (не DCV)	
o1)	Trafilamento interno massimo Maximum internal leakage rate Taux de fuites internes maximaux höchste innere Leckluftquote Índices máximos declarados de fuga interna Максимальной процент внутренней утечки	%		N/A -
o2)	Trafilamento esterno massimo Maximum external leakage rate Taux de fuites externes maximaux höchste äußere Leckluftquote Índices máximos declarados de fuga externa Максимальной процент внешней утечки	%		N/A -
p1)	Tasso di miscela interno Internal mixing rate Taux de mélange interne Mischquote der Zuluftseite Índice de mezcla interna Процент внутреннего смешивания	%		N/A -
p2)	Tasso di miscela esterno External mixing rate Taux de mélange externe Mischquote der Abluftseite Índice de mezcla externa Процент наружного смешивания	%		N/A -

q)	Segnale avvertimento filtro Visual filter warning Alarme visuelle des filtres optischen Filterwarmanzeige Señal visual de aviso del filtro Визуальное предупреждение засорения фильтра	-	N/A -	
r)	Istruzioni installazione griglie Instructions to install regulated grilles Instructions de l'installation de grilles réglementées Anweisungen zur Anbringung regelbarer Gitter Instrucciones para la instalación de rejillas reguladas Инструкция по установке регулируемых решеток	-	vedere libretto istruzioni check the instruction booklet voir le manuel d'instructions sehen Sie die Montageanweisungen Проверьте буклет с инструкциями Tikrinkite instrukcijas knygeleje	
s)	Indirizzo Internet istruzioni di pre/disassemblaggio Internet address for pre/disasassembly instructions Adresse internet concernant les instructions de préassemblage/démontage Internetanschrift für Anweisungen zur Vormontage/Zerlegung Dirección de internet para las instrucciones de montaje y desmontaje Интернет адрес	-	www.aerauliqa.com	
t)	Sensibilità del flusso alle variazioni di pressione Airflow sensitivity to pressure variations Sensibilité du flux d'air aux variations de pression Druckschwankungsempfindlichkeit des Luftstroms Sensibilidad del flujo de aire a las variaciones de presión Чувствительность воздушного потока к изменениям давления	%	N/A -	22
u)	Tenuta all'aria interna/esterna Indoor/outdoor air tightness Étanchéité à l'air intérieur/extérieur Luftdichtheit zwischen innen und außen Estanqueidad al aire interior/exterior Внутр./наружн. воздухопроницаемость	m³/h m³/час	57	170
v1)	Consumo annuo di energia (AEC) climi caldi AEC - Annual electricity consumption - warm climates Consommation d'électricité annuelle (CEA) en climat chaud jährlicher Stromverbrauch (JSV) für warmen Klimatyp Consumo de electricidad anual (CEA) en clima cálido Годовое электропотребление (AEC) - теплый период	kWh кВт*ч	1,5	1
v2)	Consumo annuo di energia (AEC) climi temperati AEC - Annual electricity consumption - average climates Consommation d'électricité annuelle (CEA) en climat moyen jährlicher Stromverbrauch (JSV) für durchschnittlichen Klimatyp Consumo de electricidad anual (CEA) en clima templado Годовое электропотребление (AEC) - переходный период	kWh кВт*ч	1,5	1
v3)	Consumo annuo di energia (AEC) climi freddi AEC - Annual electricity consumption - cold climates Consommation d'électricité annuelle (CEA) en climat froid jährlicher Stromverbrauch (JSV) für kalten Klimatyp Consumo de electricidad anual (CEA) en clima frío Годовое электропотребление (AEC) - зимний период	kWh кВт*ч	1,5	1
w1)	Risparmio di riscaldamento annuo (AHS) climi caldi AHS - Annual heating saved - warm climates Économie annuelle de chauffage (EAC) en climat chaud jährlicher Einsparung an Heizenergie (JEH) für warmen Klimatyp Ahorro anual en calefacción (AAC) en clima cálido Количество сохраненного тепла (AHS) - теплый период	kWh кВт*ч	6,3	6,3
w2)	Risparmio di riscaldamento annuo (AHS) climi temperati AHS - Annual heating saved - average climates Économie annuelle de chauffage (EAC) en climat moyen jährlicher Einsparung an Heizenergie (JEH) für durchschnittlichen Klimatyp Ahorro anual en calefacción (AAC) en clima templado Количество сохраненного тепла (AHS) - переходный период	kWh кВт*ч	14	14
w3)	Risparmio di riscaldamento annuo (AHS) climi freddi AHS - Annual heating saved - cold climates Économie annuelle de chauffage (EAC) en climat froid jährlicher Einsparung an Heizenergie (JEH) für kalten Klimatyp Ahorro anual en calefacción (AAC) en clima frío Количество сохраненного тепла (AHS) - холодный период	kWh кВт*ч	27,3	27,3

